

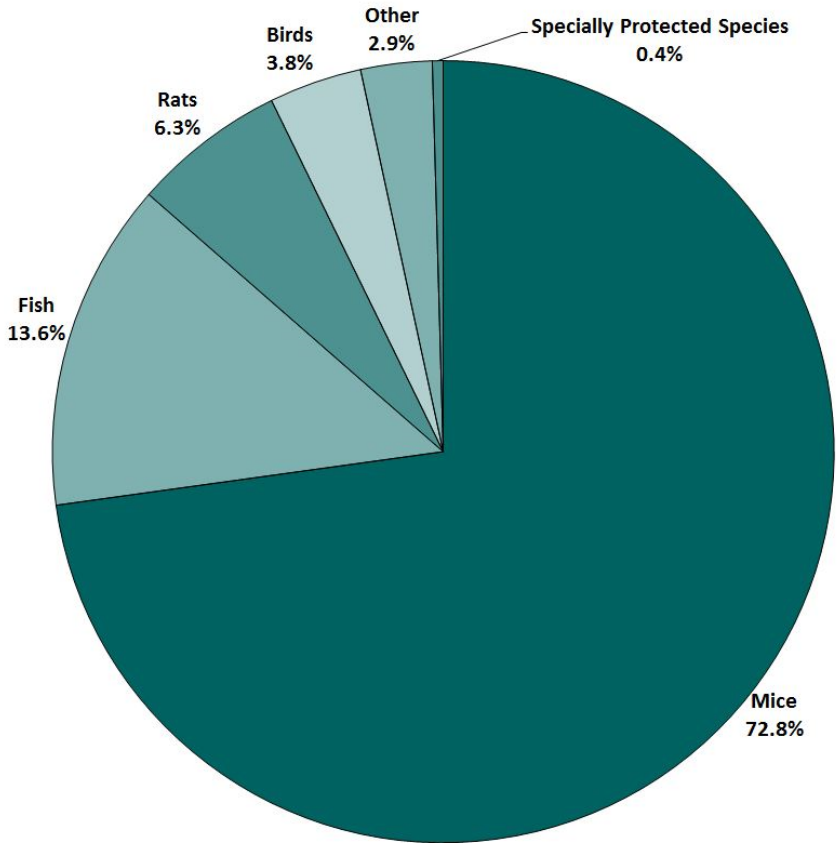


THE UNIVERSITY *of* EDINBURGH
Bioresearch & Veterinary Services

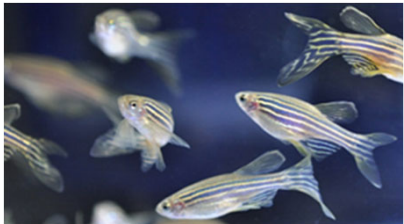
The University of Edinburgh and Research using Animals

Dr Lesley Penny
Director of Bioresearch and Veterinary Services

Species used



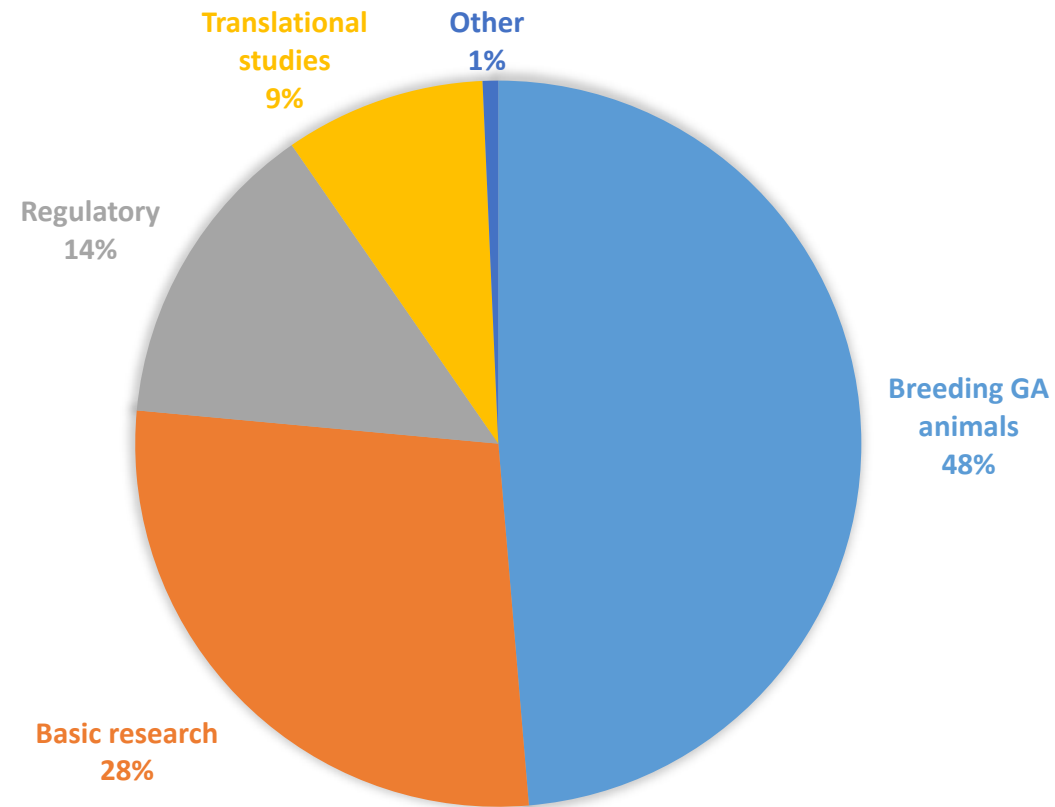
THE UNIVERSITY of EDINBURGH
Bioresearch & Veterinary Services



Procedures by purpose 2016

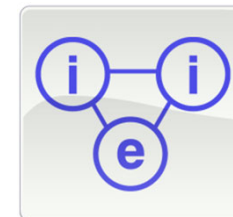


THE UNIVERSITY of EDINBURGH
Bioresearch & Veterinary Services





Edinburgh Cancer
Research Centre



The Patrick Wild Centre
for Research into Autism, Fragile X Syndrome & Intellectual Disabilities



THE UNIVERSITY
of EDINBURGH



Improving lifelong well-being



UK Dementia
Research Institute



EUAN MACDONALD CENTRE
FOR MOTOR NEURONE DISEASE RESEARCH



INSTITUTE OF GENETICS
& MOLECULAR MEDICINE



Centre for
Neuroregeneration



NEWS

Health

Liver transplants 'may be unnecessary thanks to new drug treatment'

By James Gallagher
Health and science correspondent, BBC News

🕒 16 August 2018 | 📄

👍 🗨️ 🐦 ✉️ ➦ Share



A potential treatment for sudden liver failure could cut the need for transplants, say scientists at the University of Edinburgh.

Top Stories

Astronauts escape rocket

The capsule carrying the crew members has landed

🕒 43 minutes ago

Record-breaking storm south-east

🕒 18 minutes ago

Trump UK visit costs police

🕒 14 minutes ago

Features



NHS Tracker: Check your area

NEWS

Home | UK | World | Business | Politics | Tech | Science | Health | Family & Education | Entertainment & Arts | Stories | More ▾

Scotland | Scotland Politics | Scotland Business | Edinburgh, Fife & East | Glasgow & West | Highlands & Islands | More ▾

New test hope for liver disease in dogs

© 6 August 2018

[f](#) [💬](#) [🐦](#) [✉](#) [Share](#)



GETTY IMAGES

Current diagnosis is based on biopsies which are expensive and can lead to complications

Vets in Edinburgh have developed a blood test that quickly identifies early signs of liver disease in dogs.

Top Stories

Astronauts escape malfunctioning rocket

The capsule carrying the US and Russian crew members has landed in Kazakhstan.

🕒 38 minutes ago

Record-breaking storm mauls US south-east

🕒 13 minutes ago

Trump UK visit cost nearly £18m to police

🕒 8 minutes ago

Features



NHS Tracker: Check key targets in



Animal use in 2017

Species	Number	Percentage
Rodents	176,307	78.2%
Fish	44,415	19.7%
Birds	3,464	1.5%
Farm animals	713	0.32%
Animals in the wild	373	0.17%
Frogs	80	<0.1%
RDSVS client dogs	14	<0.1%





THE UNIVERSITY *of* EDINBURGH
Bioresearch & Veterinary Services

BVS Services provided

- Small animal and zebrafish facilities (Bioresearch and Veterinary Services)
- Large animal and poultry (The Roslin Institute)
- Home Office and Veterinary Services (BVS)



Services provided;

- Animal care and husbandry, including breeding
- Technical assistance including clinical monitoring and complex surgical procedures
- Training in husbandry and experimental techniques
- Grant costing, advice on animal numbers and procedures
- Home Office Licence training and administration
- Animal Databases



Production and preservation of transgenic animals, including imports

Bioresearch & Veterinary Services CENTRAL TRANSGENIC CORE

Central Transgenic Core home

About Us

Transgenic Mouse Production

Transgenic Rat Production

Cryopreservation

Rederivation

Importation

FAQs

Useful Links

Home > Bioresearch & Veterinary Services > Facilities > Transgenics

Contact us



About Us

Central Transgenic Core (CTC) offers a comprehensive, reliable & high-quality transgenic service to researchers at the University of Edinburgh.



Transgenic Mouse Production

Information about transgenic mouse production

[Microinjection \(Mice\)](#)

[ES Cell Microinjection \(Mice\)](#)

[ES Cell Aggregation \(Mice\)](#)

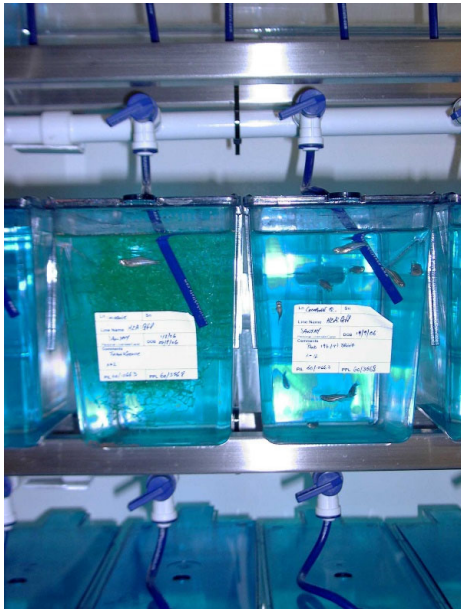
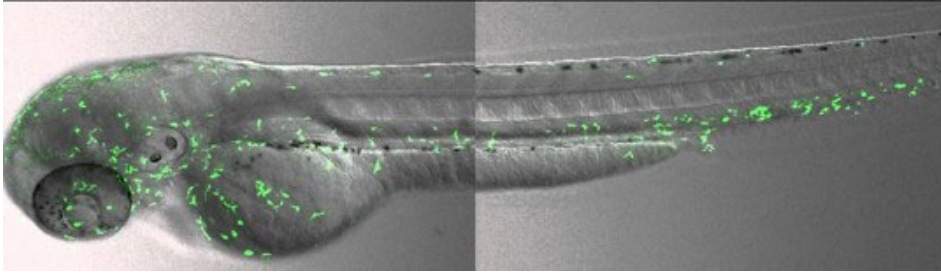


Transgenic Rat Production

Information about transgenic rat production

[ES Cell Microinjection \(Rats\)](#)

[Microinjection \(Rats\)](#)



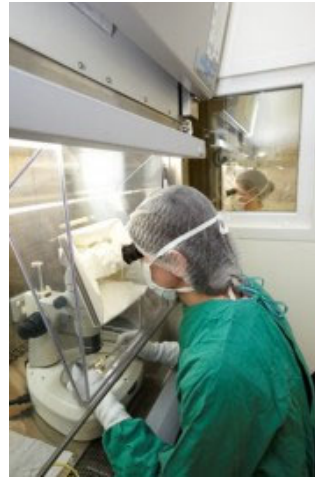
THE UNIVERSITY of EDINBURGH
Bioresearch & Veterinary Services





THE UNIVERSITY *of* EDINBURGH
Bioresearch & Veterinary Services

Mice and rats – multiple facilities





Home Office Licences

Three tier licencing system authorised by Secretary of State

- Establishment licence (PEL)
- Project Licence (PPL)
- Personal Licence (PIL)

Licences the place

Licences the body of work

Licences the person

Version Date <small>Applicant to complete version date</small>	OFFICIAL SENSITIVE
	PPL Number

Home Office

PROJECT LICENCE APPLICATION
UNDER THE ANIMALS (SCIENTIFIC PROCEDURES) ACT 1986

PROJECT TITLE (<50 characters including spaces)

A. PROJECT LICENCE HOLDER

Under the Animals (Scientific Procedures) Act 1986, section 5, a project licence is granted by the Secretary of State which specifies a programme of work and authorises the application, as part of that programme, of specified regulated procedures to animals of specified descriptions at a specified place or specified places. The project licence holder is responsible for the overall implementation of the programme of work and for ensuring that the programme is carried out in compliance with the conditions of the licence.

a. Title (e.g. Professor, Dr, Mr)	
b. Surname	
c. Forename(s)	
d. Qualifications	
e. Position or appointment	
If you have previously been known by another name, give that name:	
f. Surname	
g. Forename(s)	

CONTACT DETAILS

a. Address for correspondence <small>This will normally be the address of the establishment where you are working and must be within the UK</small>	
Post Code	
b. Telephone number and extension	
c. Mobile phone number (optional)	
d. E-mail address (please use criminal justice secure mail (CJSM) if you have one)	

It is now possible to encrypt personal and other possibly sensitive information sent to, or received from, the Home Office by e-mail through the CJSM system. CJSM facilitates routine secure e-mail correspondence with minimal inconvenience to users. Detailed instructions for registering can be read on the CJSM website at <https://www.cjsm.net/>

The Home Office, in line with the rest of HMG, has implemented the Government Security Classification (GSC). Details of the GSC can be found at https://www.gov.uk/government/uploads/system/uploads/attachment_data/file/270000/government-security-classification. Please note that documents and emails you receive may contain specific handling instructions.

Handling Instructions: Contains personal sensitive information, subject to confidentiality requirements under the Data Protection Act. This should only be circulated in accordance with ASFA Guidance and stored in a locked secure location.

All government information may be subject to an FOI request and subsequent assessment.

OFFICIAL SENSITIVE



Monitoring and advising

Local

- Animal Welfare and Ethical Review Body (AWERB)
- Animal Welfare Committee

External

- Home Office
- Animals in Science Committee (independent)



Openness and communications



THE UNIVERSITY of EDINBURGH
Bioresearch & Veterinary Services

ANIMAL RESEARCH

Animal research home

Facts & figures

Regulation

News

Animal welfare & ethics


Alternatives and improvements

Home > Research > Animal research

Contact us

Animal Research - an introduction

An introduction to the use of animals in research at the University of Edinburgh.




0:00 / 7:32

Latest news on University animal research

- [Parkinson's disease clues from zebrafish study](#)
- [Animals in Research: Any Alternatives? Feather formation clues could help cool birds](#)


Facts and figures

Why we use animals in research, alternatives to using animals and how many animals are used.



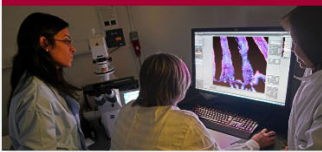
Regulation

Strict laws control the use of animals in



Animal welfare and ethics

High standards of animal welfare



Alternatives and improvements