



THE UNIVERSITY of EDINBURGH
Finance

► Finance : Supporting High Quality Research

Informatics Forum

24th April 2019

9.30 - 13.30





Thank you

A year in research finance...



Roles and Responsibilities - Schools/RGS	Project Acorn	Ref Readiness	Institutional/Grant Audits	eFinancials/FPM Upgrades
Worktribe Upgrades	BVS costing	Staff Changes	BREXIT	CORE/SEP
Year End	Finance Helpdesk	Finance System Team	Finance Executive	And more BAU.....

Our year in numbers ...



£280m
Research
Income 17/18

42% Research
Council

21% Research
Charities

15% EU
Funding

3% UK Industry

Average 250
grants per RGA

Average 1700
grants per
manager

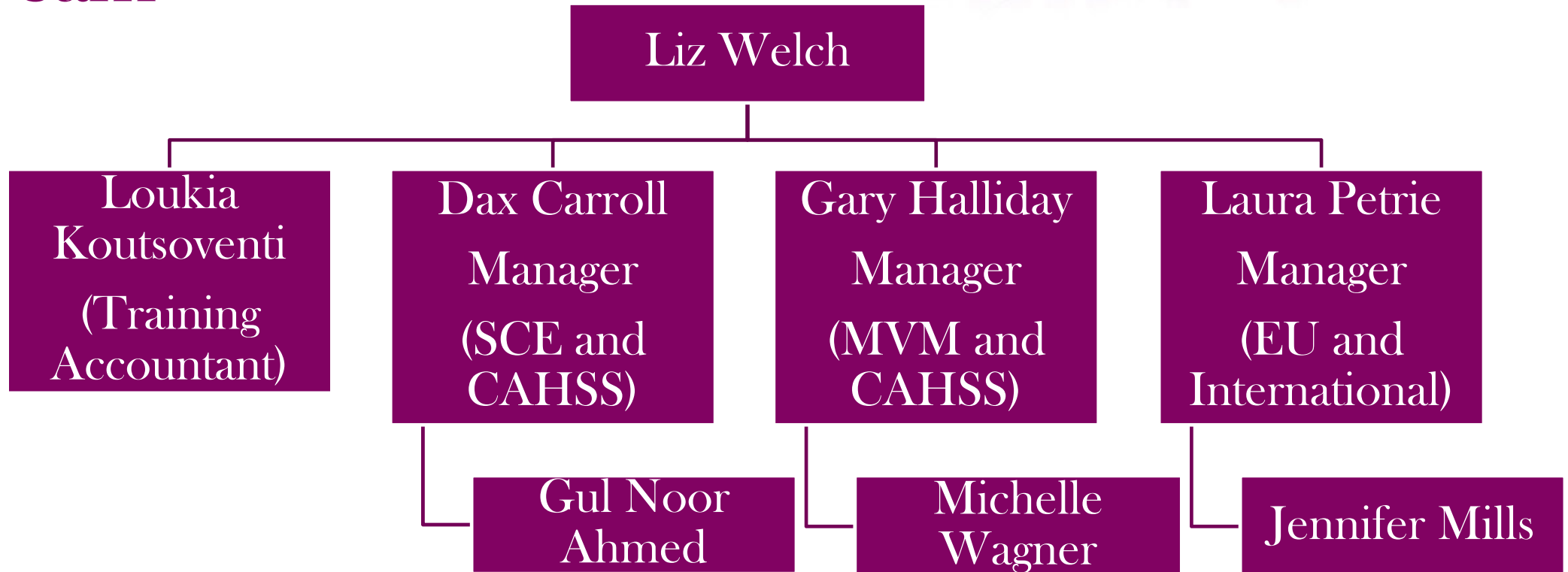
50+ grant audits
last year

Average value
of postable
research grants
is £500k

90% active
grants under
£1m

10% active
grants over £1m

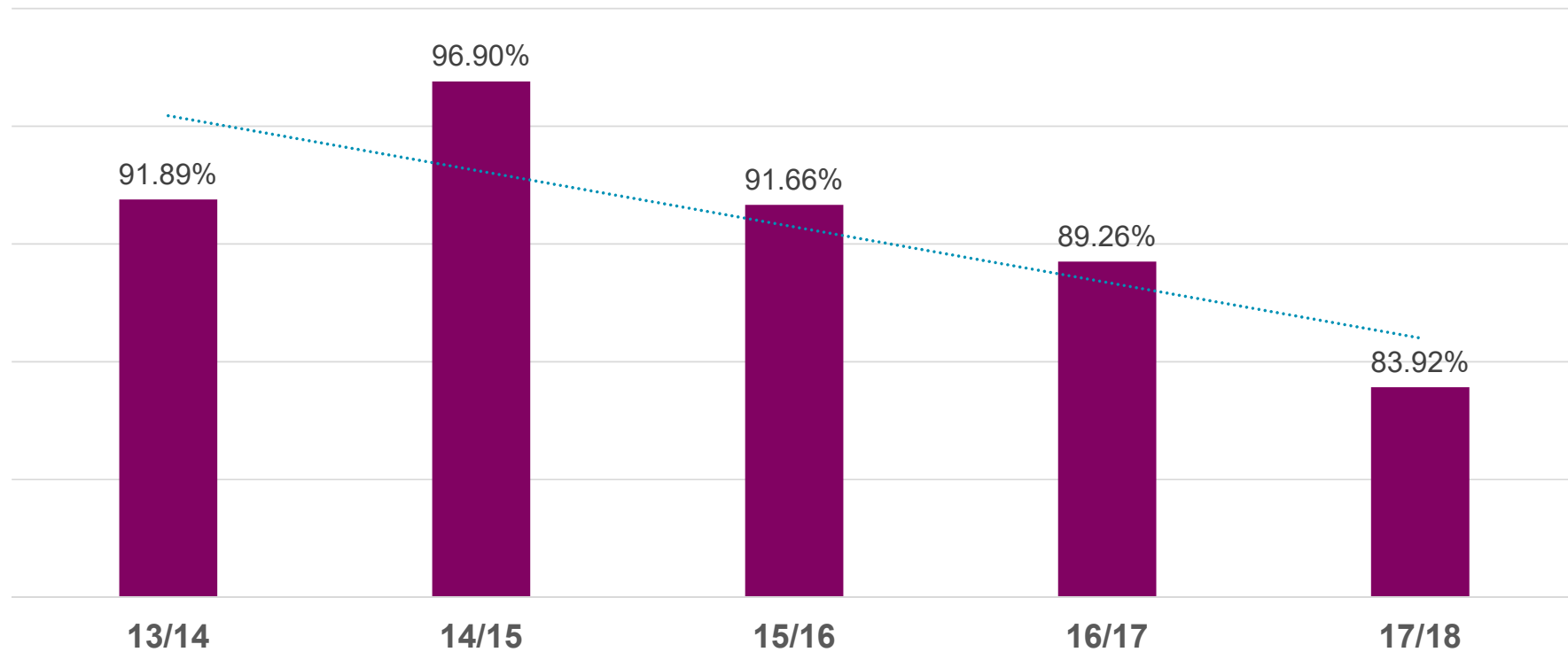
Research Grants Management Team



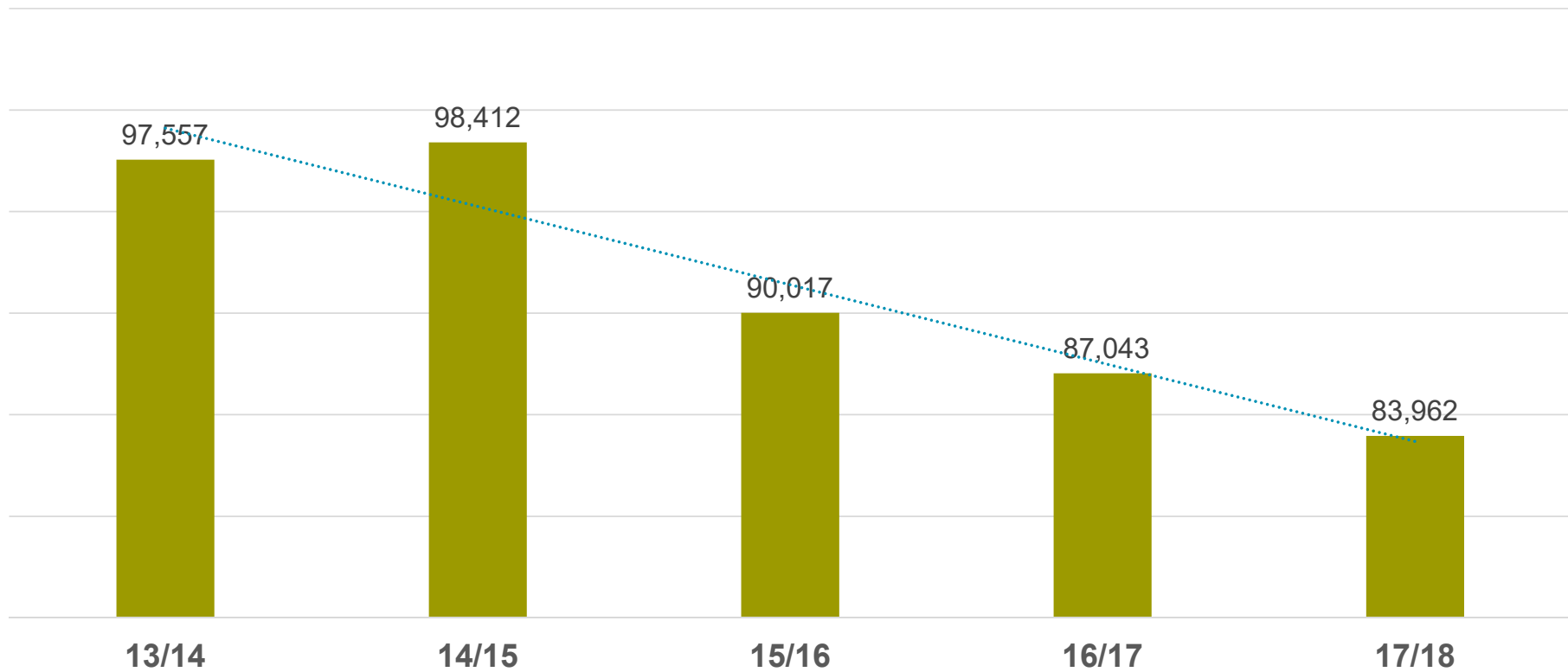


Sustainable Research

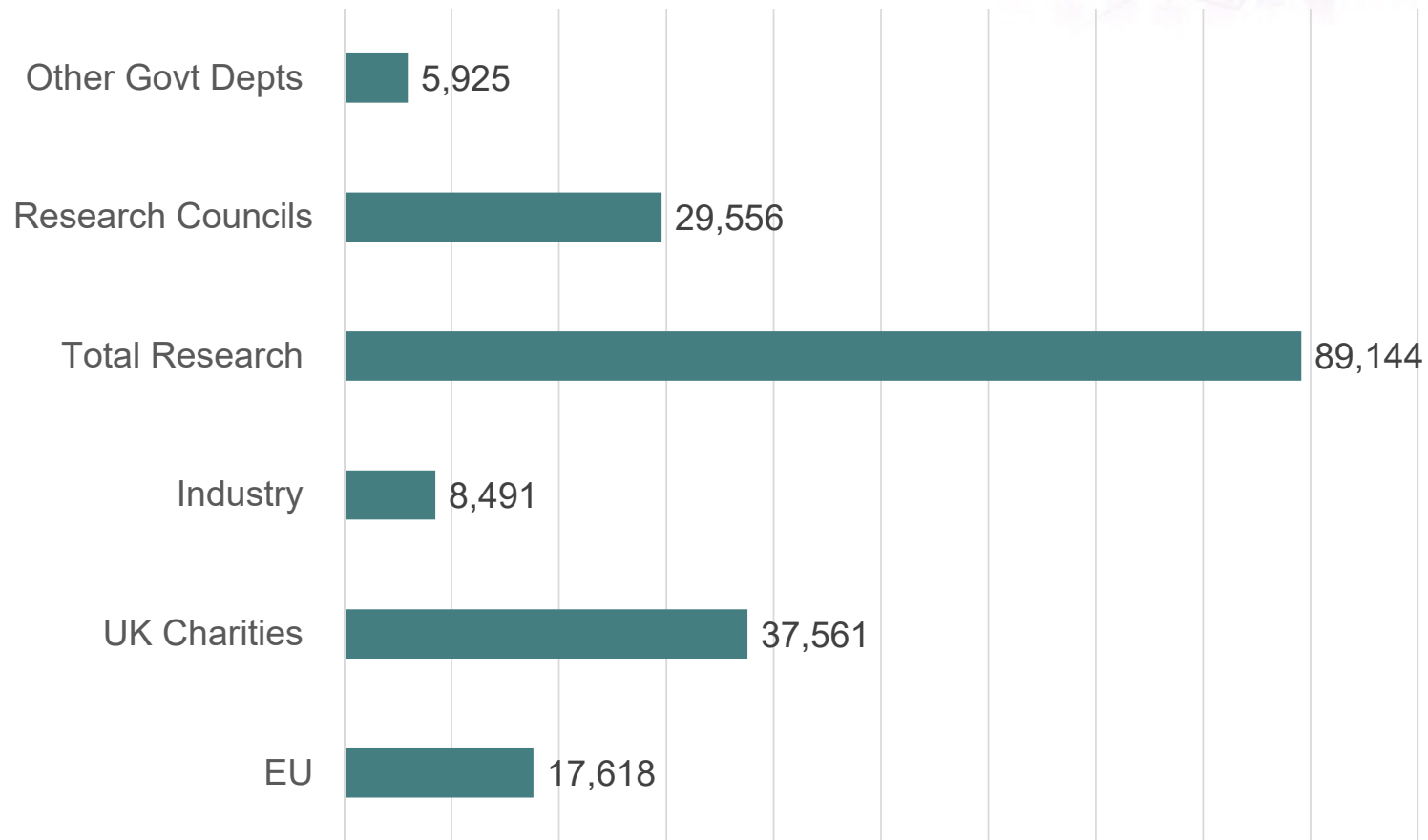
% recovery of fEC on Research Income including PGR/Internally/Externally funded



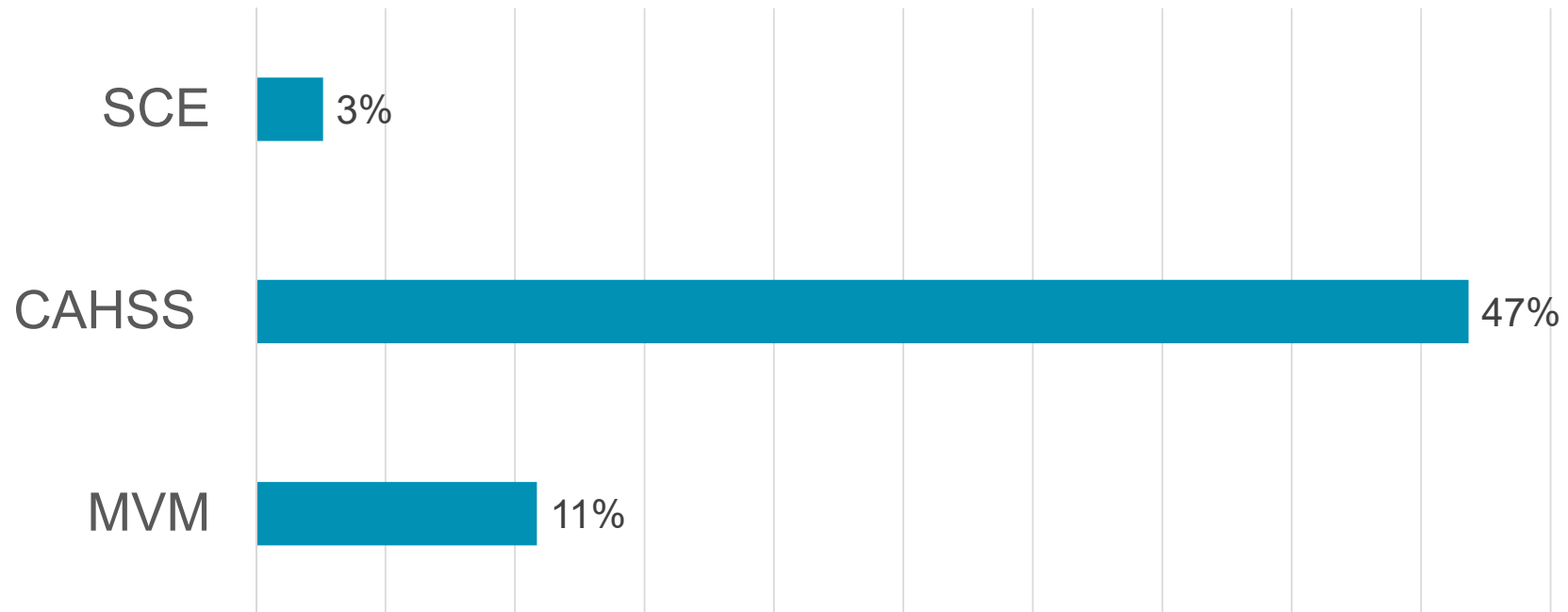
SFC Research Grant Funding



17 /18 fEC shortfall by Funder £m



17/18 % fEC under funding
includes PGR/Internally/Externally funded
research





New Finance System



2018

INOAPPS UK WINS
Cloud First
Partner of the Year
Award

ORACLE Platinum Partner



“Single source of project truth tracking all the financial elements of a project e.g. budgets, estimates, costs, income, timesheets, together with award attributes e.g. award body, PI, significant dates, cost sharing arrangements.”

Projects /
Research
Ledger

▶ POETA

- ▶ Project
- ▶ Task
- ▶ Award
- ▶ Expenditure Type
- ▶ Expenditure Organization



- Better linkages between project tasks, awards, costs, income e.g.
 - manage multiple funding arrangements for a single project
 - manage multiple projects from a single award
 - manage different funding arrangements for different tasks within a project
- Improved tracking of budgets and amendments
- More flexible indirect costing



- Integrated with HR/Finance/Payroll/Procurement
- Complement worktribe reporting
- Operational dashboard
- Improved management of budgets and forecasts
- Visibility over funded or unfunded budgets
- Currency reporting
- US federal reporting



Improved
Reporting



More flexibility around coding salaries



- Ineligibility rules for pay elements
- Validation of codes on input
- Reduction in number of salary journals
- Salary recharges via timesheet
- Time recording with approvals



“Our new Oracle general ledger will, quite literally, transform the way we work in a hugely positive way.

Specific to research finance the projects' ledger will provide real time financial management information supporting robust and informed decision making and bespoke reporting solutions that will streamline our grant administration process from cradle to grave.

Both will result in a much more efficient, effective and timely service provided to our key stakeholders including our academic and school finance colleagues and of course our wide array of funders.”

Dax Carroll

Research Grant Manager



Questions ?