



The University of Edinburgh



RSO : Enabling High Quality Research

Lorna Thomson



The University of Edinburgh



The Research Support Office offers specialist knowledge and targeted support to the University of Edinburgh's research community across the research lifecycle and particularly in the pursuit of funding.

We help develop world-class research projects at any scale, from small awards to complex interdisciplinary bids. This includes horizon scanning, guidance on research funders, advice on targeting the right research opportunities, identifying pathways to impact, developing the research funding bid and dealing with contractual matters upon award.

We provide resources for researchers and the extended community of research support, through linked services and shared training, throughout the University.

Web: <https://www.ed.ac.uk/research-support-office>

Blog: <https://www.blog.rso.ed.ac.uk/>



The University of Edinburgh



£403m

The amount of research funding awarded in 2017/18

£28m

Increase in research funding awarded compared to 2016/17

#5

In the UK for research income

£1.2bn

The value of research funding applications we supported in 2017/18

2600

Research funding applications submitted by us for the University in 2017/18



Responsible Research Metrics
Policy agreed at University
Executive – UoE will sign DoRA



2nd in the UK for leading
collaborative awards



£2.2m contract with DFID for the
School of Law



SPECTRUM proposal was
successful - Usher (CPHS),
Geosciences and SSPS.



KE & Impact event
World-leading research:
A celebration of impact
<https://vimeo.com/327075918>



SRD Reports on sector
deals, European Strategic
Partnerships, US Funding,
Translational Research

Successes and Highlights

GCRF Multi-Hazard Urban
Disaster Risk Transition Hub



75 applications and 24
participants for Strategic
Leadership Programme



Worktribe Learning Session
with colleagues from EI



Awards in-line with 3-year
average – forecast £330m





Our ambition

We are a
**professional, agile
and responsive team**

- “Respected as professionals”, not “liked as administrators”
- Providing strategic direction, specialist knowledge, targeted expert support
- Optimising central and local support with commitment to high standards

We enable **high
quality research**

- Leading a culture of research success across the University
- Enabling excellent bids of all sizes and from all locations on tight timescales
- Facilitating interdisciplinary and external partnership working

We maximise
opportunities

- Focusing on emerging opportunities by horizon scanning
- Taking a targeted approach with PIs and Funders
- Providing greater support for new and emerging research areas

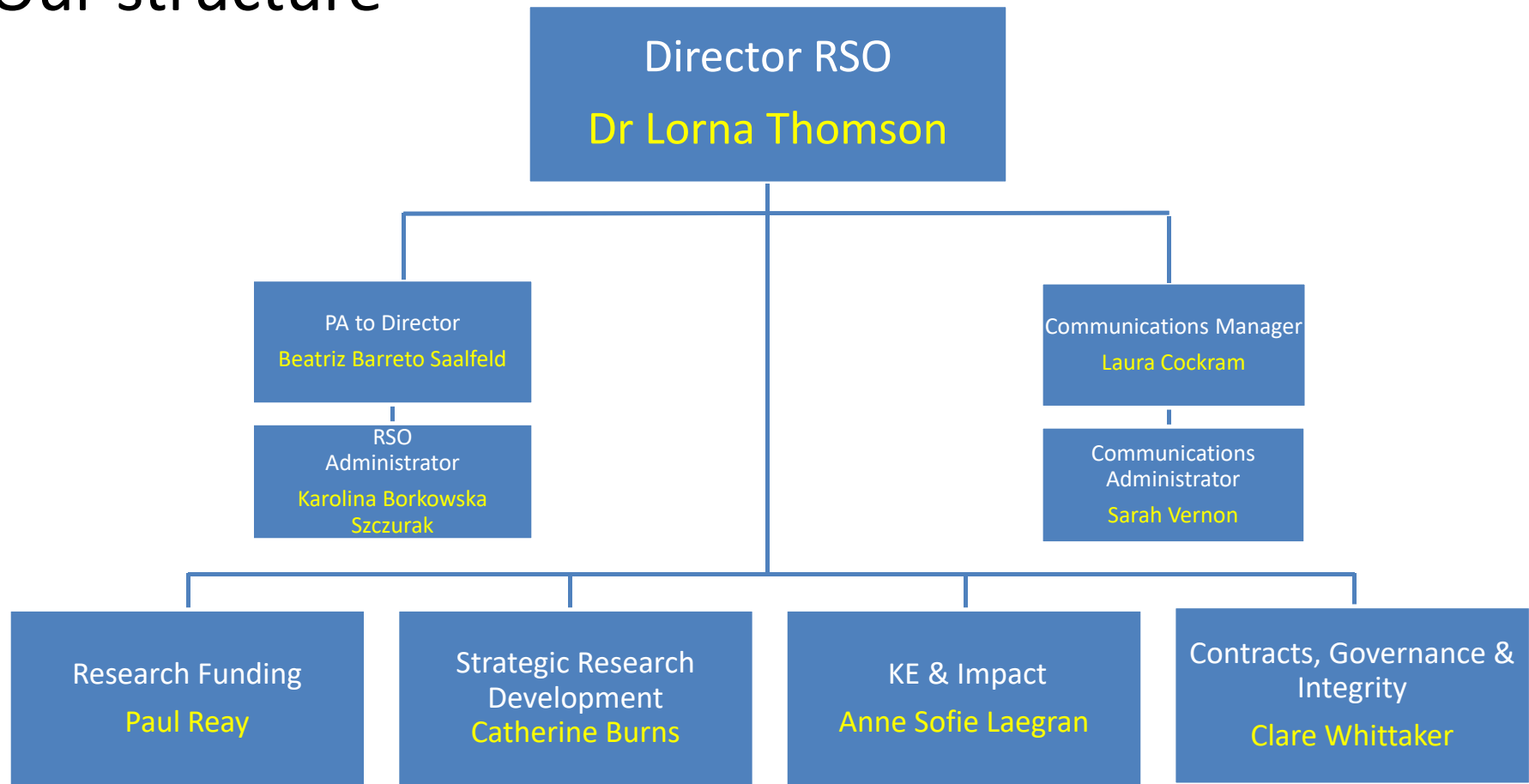


Our expertise





Our structure





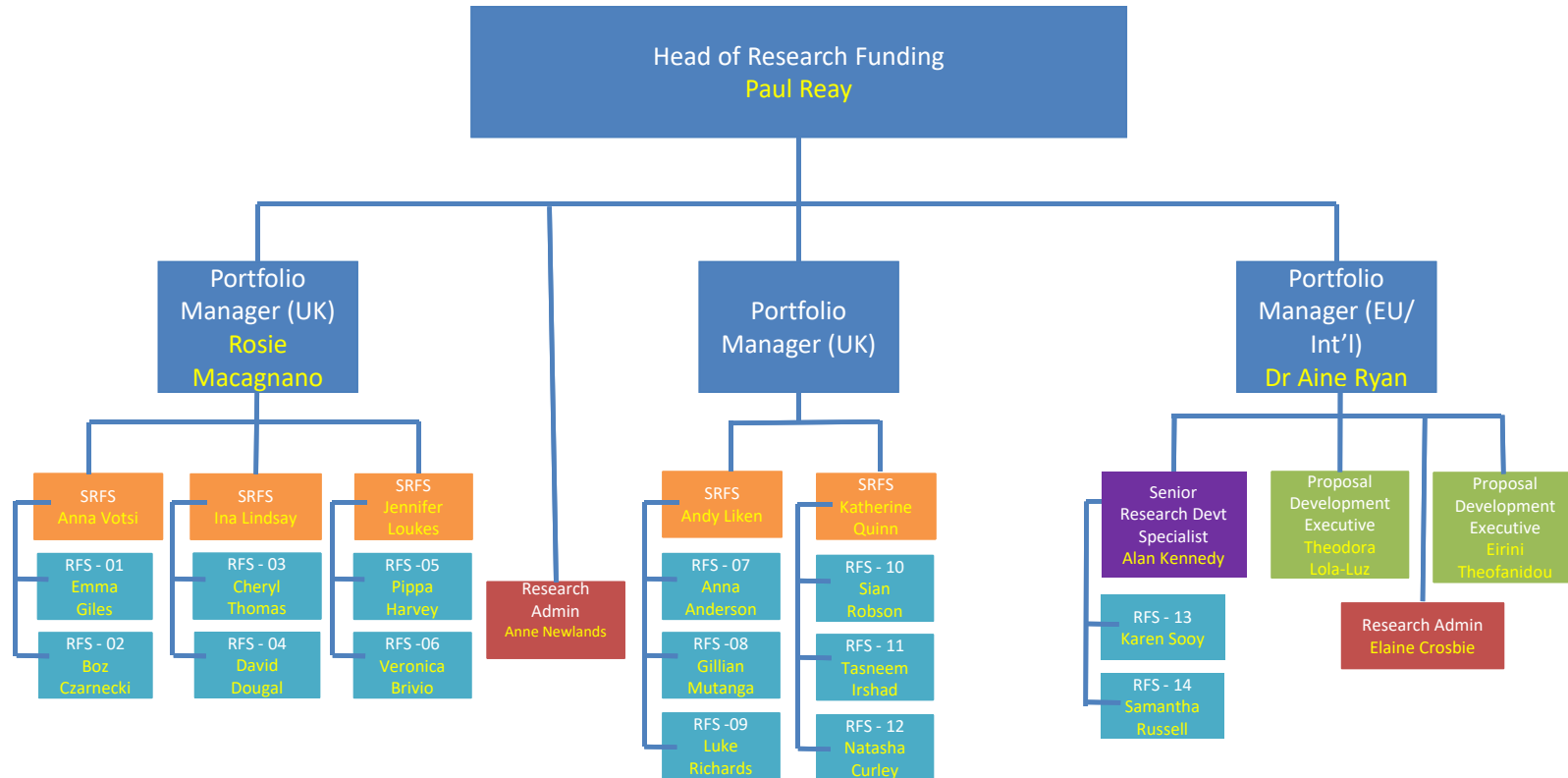
Research Funding Team

The Research Funding Team are responsible for the provision of institution-wide pre-award support for research and research-related work ensuring a consistently high standard of service and accessibility for service users.

The team cost, facilitate, co-produce and manage the development of research proposals ensuring fit to call, compliance and application of best practice. We offer expertise across UK, European and international funders.

The Research Funding Team:

- Are networked across the University to provide the best advice to researchers no matter their domain or need
- Can provide expert advice on funding opportunities and schemes
- Work together to reflect the interdisciplinary nature of many research projects



Senior Research Funding Specialist UK

Senior Research Development Specialist

Research Funding Specialist

Administrator

Proposal Development Executive



The University of Edinburgh

	Portfolio	Research Funding Specialist	Senior Research Funding Specialist	Location
1	Edinburgh College of Art, School of Informatics, Business School	Emma Giles	Anna Votsi	George Square
2	School of History, Classics and Archaeology, School of Divinity, School of Literatures, Languages and Cultures, Moray House	Boz Czarnecki		
3	School of Social and Political Science, School of Geosciences, School of Economics	Cheryl Thomas	Ina Lindsay	George Square/ Murchison House
4	School of Chemistry, School of Geosciences	David Dougal		
5	School of Engineering	Pippa Harvey	Jenny Loukes	Murchison House
6	School of Mathematics, School of Biological Sciences, School of Physics and Astronomy, EPCC	Veronica Brivio		
7	MRC Institute of Genetics and Molecular Medicine (Cancer Research UK Edinburgh Centre, Centre for Genomic & Experimental Medicine, MRC Human Genetics Unit), Division of Pathology	Anna Anderson	Andy Liken	WGH / George Square / Little France
8	Institute for Regeneration and Repair (MRC Centre for Inflammation Research, MRC Centre for Regenerative Medicine)	Gillian Mutanga		
9	Edinburgh Neuroscience (Centre for Clinical Brain Sciences, Centre for Discovery Brain Sciences), School of Philosophy, Psychology & Language Sciences	Luke Richards		
10	The Queen's Medical Research Institute (MRC Centre for Reproductive Health, Centre for Cardiovascular Science)	Sian Robson	Katherine Quinn	Little France/George Square
11	The Usher Institute of Population Health Sciences and Informatics (Centre for Medical Informatics, Centre for Global Health Research, Centre for Population Health Sciences), School of Health in Social Science	Laura Oliver		
12	The Roslin Institute, Royal (Dick) School of Veterinary Studies, Division of Infection and Pathway Medicine, School of Law, Information Services Group	Natasha Curley		
13	EU/International	Karen Sooy	Alan Kennedy	Dalhousie
14	EU/International	Samantha Russell		



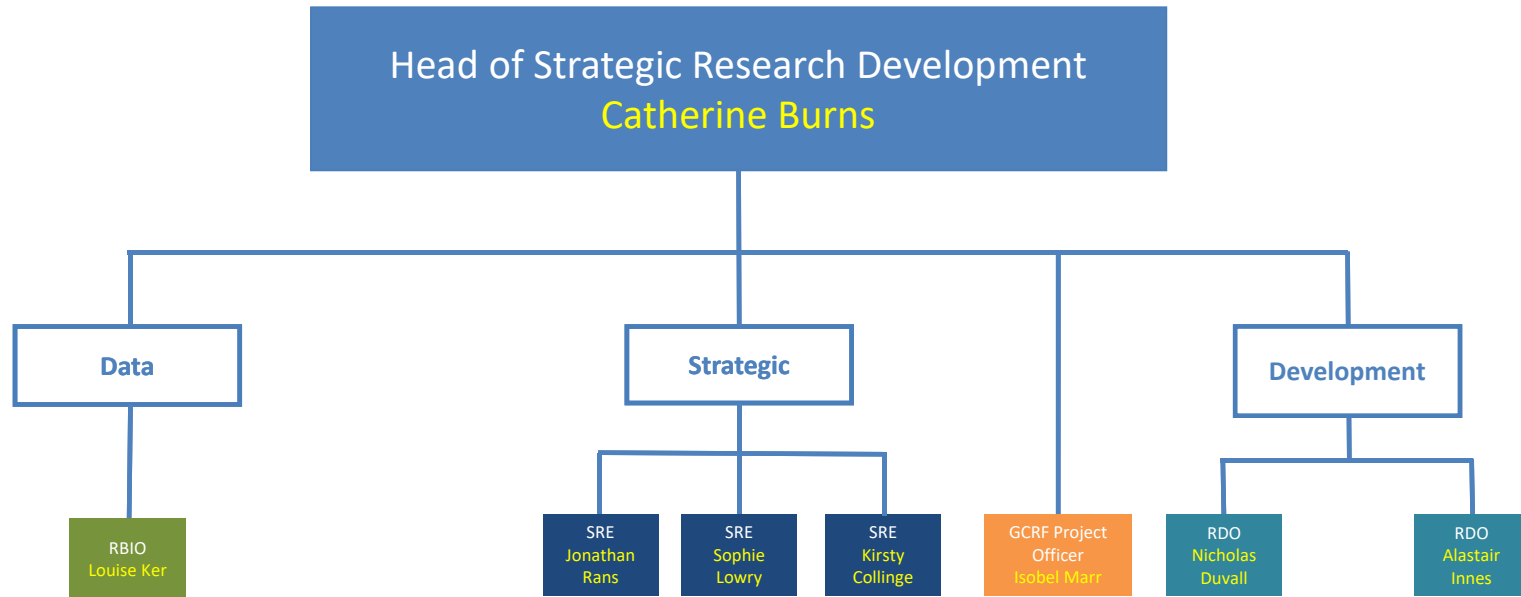
Strategic Research Development Team


The Strategic Research Development team is responsible for strategic research initiatives, research intelligence and reporting and research development.


The Strategic Research Initiatives team identify and deliver catalytic, strategic research funding projects in the University. The team delivers a portfolio of cross-university projects aimed at advancing research funding opportunities within the University.


The Research Intelligence team provide insight, data analytics, modelling and forecasting to RSO and stakeholders across the University.

The Research Development Team work closely with individual academics, Schools and Colleges to provide insights into specific funding opportunities or funding streams, provide planning support for research strategies and develop resources, events, networks and workshops to facilitate research.



 Research Business Intelligence Officer

 Strategic Research Executive

 Research Development Officer

 Project Officer



Contracts Team

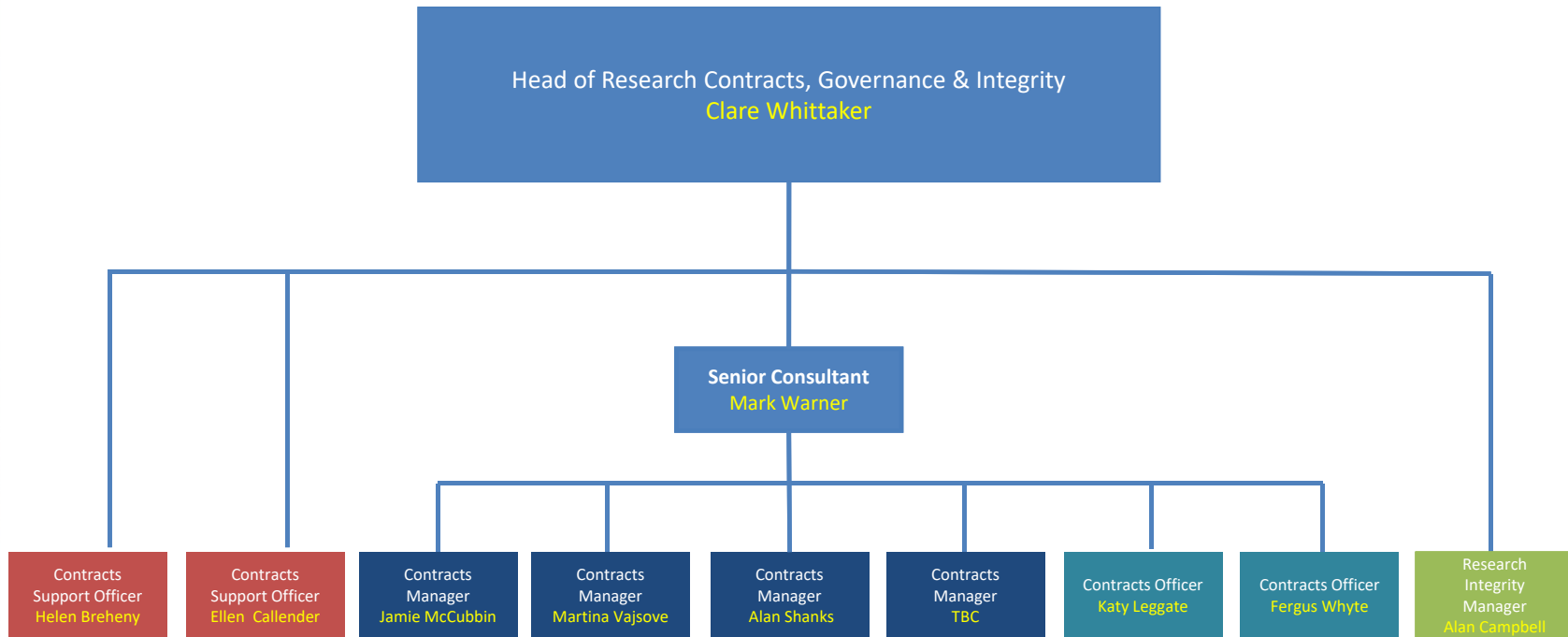
The Contracts Team provides contract and legal support to RSO and to the wider University in drafting, reviewing, negotiating and signing research contracts. We are one of four legal & contracts teams at the University.

Standard research grants and associated agreements (e.g. collaboration, sub-award, sub-contract) are typically handled by Research Funding Specialists and only referred to the Contracts Team for signing.

There are two authorised signatories for the University within the Contracts Team: Clare Whittaker and Mark Warner.

We are always happy to discuss a particular point or query in an otherwise straightforward agreement.

Non-standard and more complex agreements should be referred to the Contracts Team at RSO.Contracts@ed.ac.uk.





The University of Edinburgh

Knowledge Exchange & Impact Team

The Knowledge Exchange and Impact Team supports engagement with policy makers, practitioners, industry and the public, in order to enhance the impact of research beyond academia.

We help broker relationships with external organisations, and advise on good practice in engaging with partners and research users.

We manage internal funding schemes for impact, including the ESRC Impact Acceleration Account.

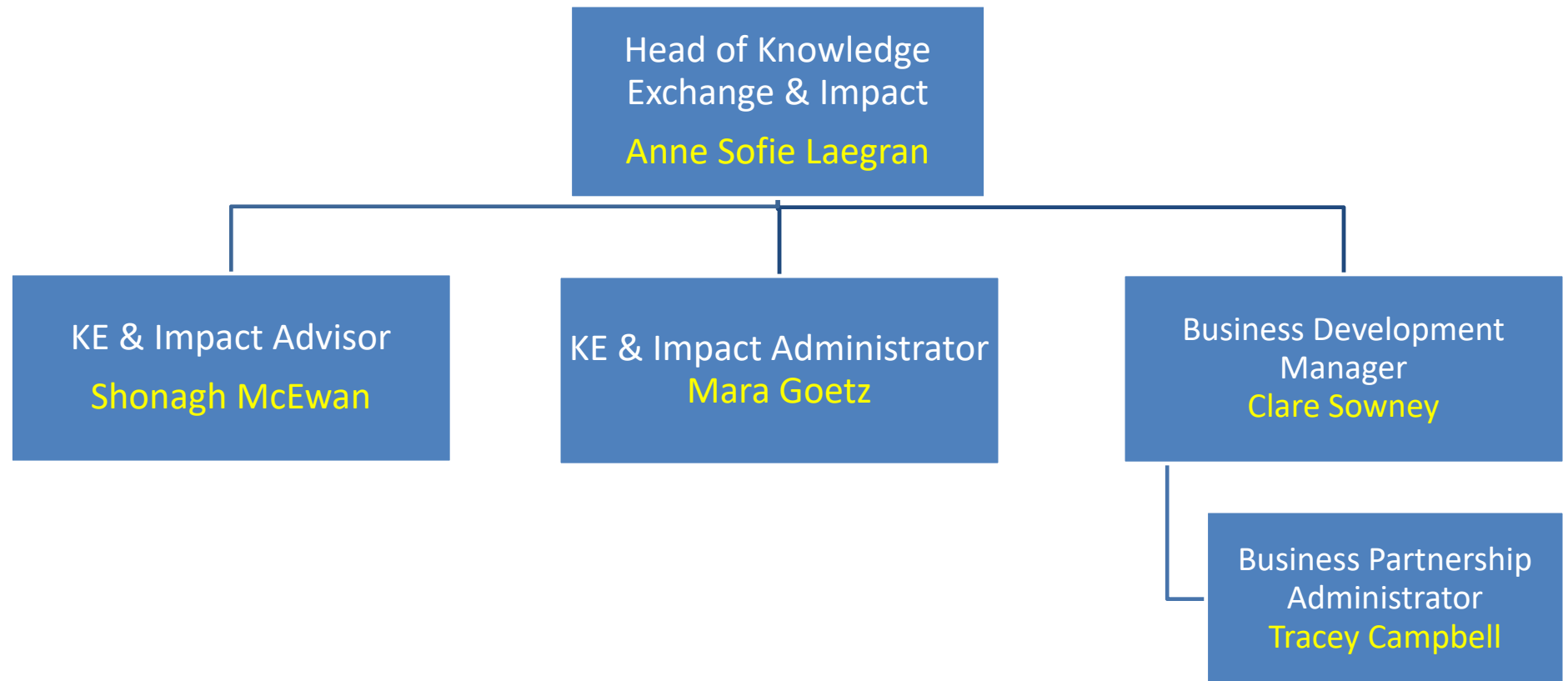
We help develop pathways to impact and industry partnerships for external funding applications.

The Knowledge Exchange & Impact Team supports academics in the College of Arts, Humanities and Social Sciences (CAHSS). We are funded by CAHSS and based within the Research Support office.





Knowledge Exchange & Impact Team





The RSO Change Programme

The Research Support Office is changing in order to meet evolving and growing demands from the research community, the University and funders.

2018/19 will be a year of transition as we embed change.

The Change Programme has been designed around the following:

- RSO staff need opportunities for development
- Academics need one point of contact and locally based support
- Academics want a range of different services from costing only to full project management
- Colleges want more in terms of data, strategy, funder relationship management
- The University needs agile and responsive teams to form around new opportunities, big bids.





Drivers of change

- Our ability to deliver what the research community needs
- Evolving business needs in the University
- Changing external funding environment
- Being able to offer parity, opportunity and progression to staff in RSO



Our values





RSO Survey - Strengths

- ✓ Community
- ✓ Integrity
- ✓ Collaboration (seeking input from others)
- ✓ RSO ambition (knowing what is expected)
- ✓ SMT members are approachable



Looking Forward.....

- Community Engagement
- Move to CSH
- Building on our positive feedback
- Working across teams