

University of Edinburgh

A global top 18-27 University (QS, THES)

23 Nobel prizes

4th (Research Power) in REF2014

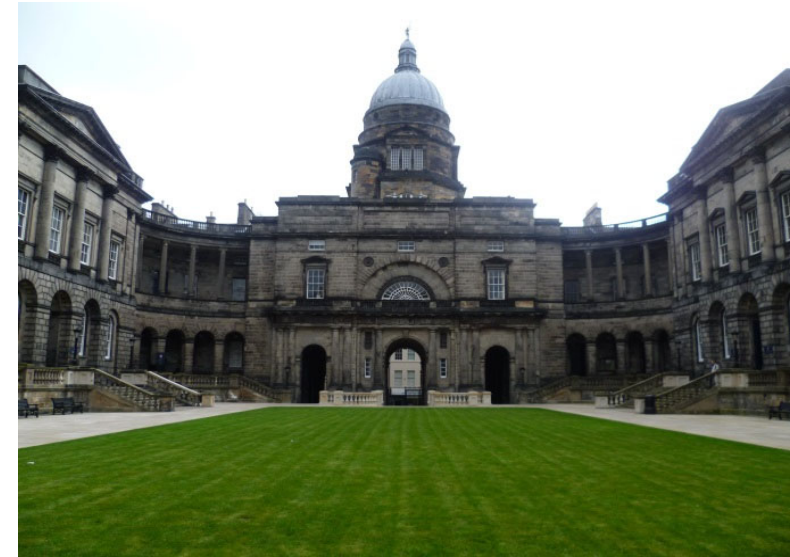
Cooperative, interdisciplinary “research without boundaries”

shape

- 39,000 students
 - 43% non-UK nationals from >140 countries
- ~2.8 million enrolled on MOOCs
- ~4,650 academic FTEs
- >£1bn turnover
- >£400m in new grants 2018 (8% pa growth since 2012)
- Investing £1.5bn in estates over next decade

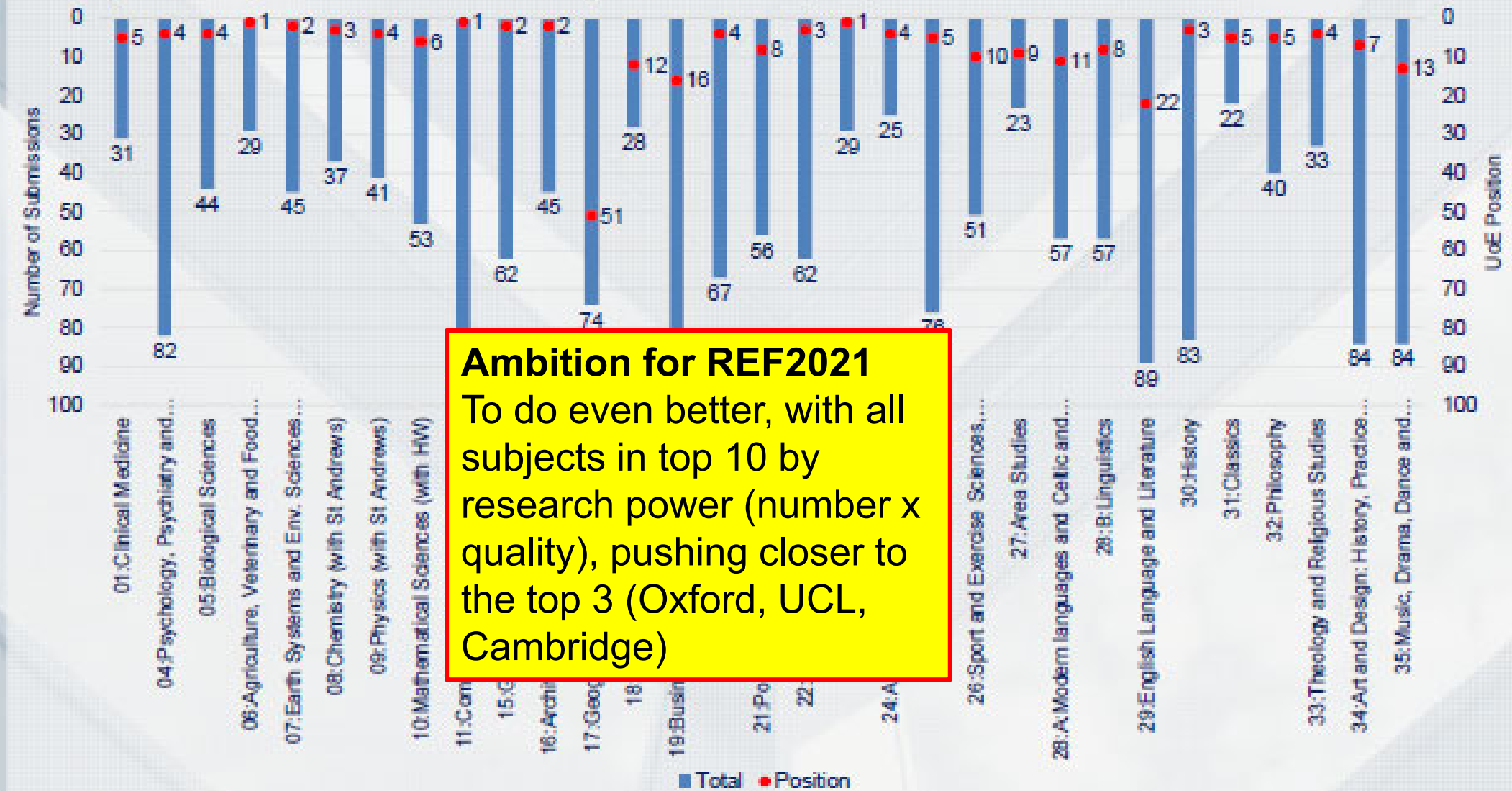
structure

- 3 colleges (med & vets; sci & eng; arts humanities & soc sci)
- 20 thematic schools
- Interdisciplinary focus
- £550m City Deal in ‘*data-driven innovation*’



REF2014 Subject Position

University of Edinburgh Research Power Position by REF Submission (2014)



Ambition for REF2021
 To do even better, with all subjects in top 10 by research power (number x quality), pushing closer to the top 3 (Oxford, UCL, Cambridge)

Some recent major investments in Edinburgh

- Data driven innovation component of City Region Deal (£550m)
- Wellcome Centre for Cell Biology, plus Centre in Development for Science, Self and Society
- ARCHER (+ A2) UK national supercomputing facility (£300m over 25y)
- Alan Turing Institute node
- STFC Astronomy Technology Centre
- Roslin Institute QQR (£33m, 2017)
- UK Centre for Mammalian Synthetic Biology
- MRC Human Genetics Unit (£55m, 2018)
- Health Data Research UK Scottish node (£10m)
- UK Dementia Research Institute centre (£25m)
- Administrative Data Research Centre (£12m)
- 4 MRC Centres (inflammation research, regenerative medicine, reproductive health, cognitive ageing)
- 2 BHF Centres of Excellence
- Etc, etc

University Institutes: research, talent and industry 'breathing the same air'

Cross-University Institutes



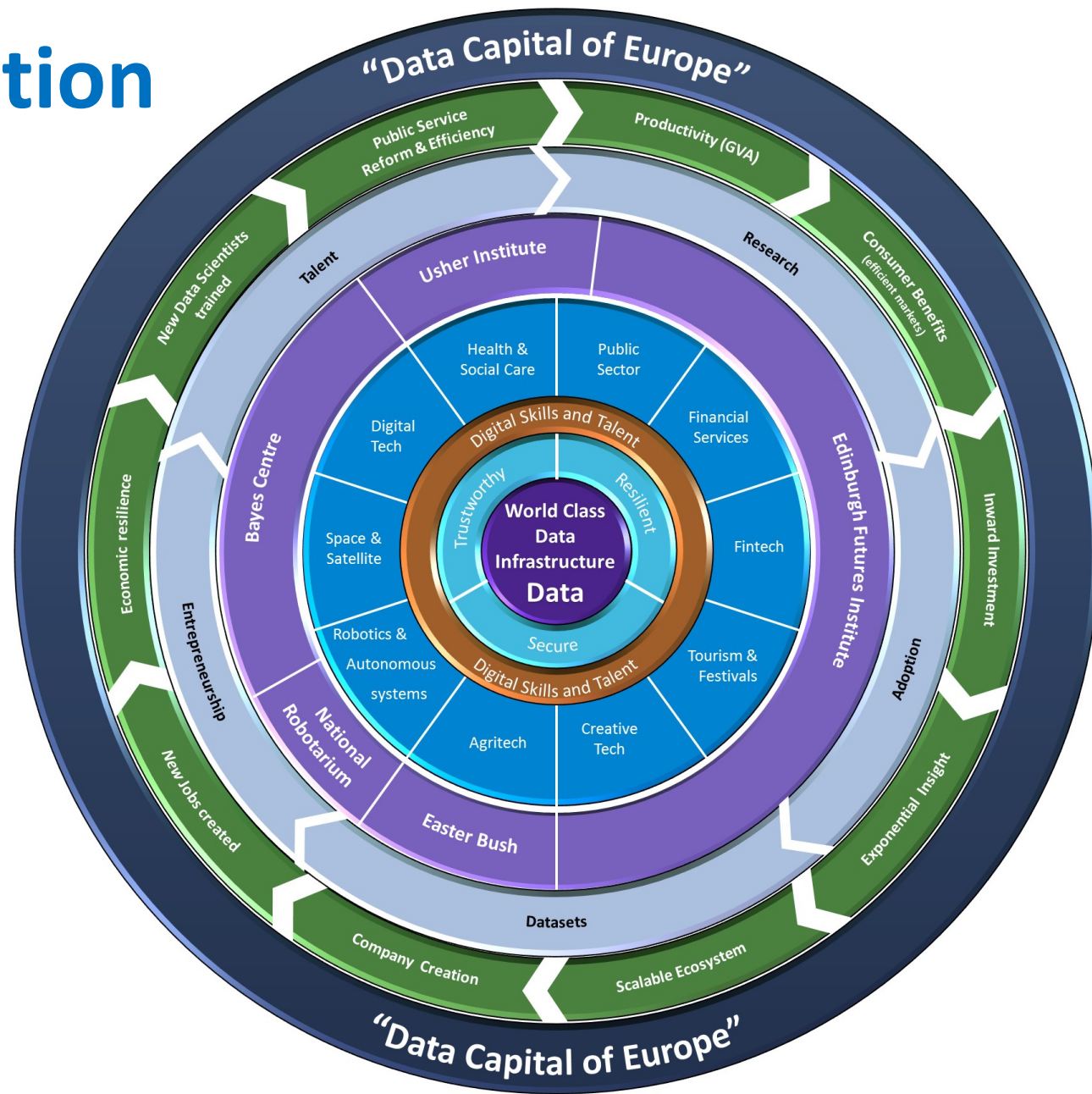
Data Driven Innovation

Collaborative Data Hubs



Date-driven innovation

- Five DDI hubs
- Secure and trusted data infrastructure
- Ten target sectors
- Five themes:
Talent, Research, Adoption,
Datasets, Entrepreneurship



Public trust and the ethical use of data

Ethics and privacy are at the forefront of the DDI Programme.

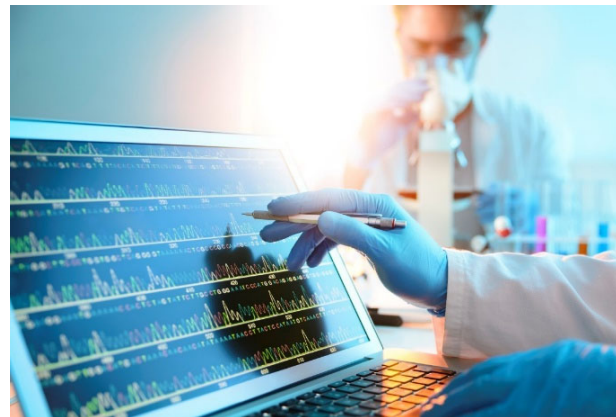
We have an opportunity to lead the way in developing ethical, regulatory, privacy and security standards.

We have expertise in the secure storage and ethical use of data for research - Scottish Government's Charter for Safe Havens.

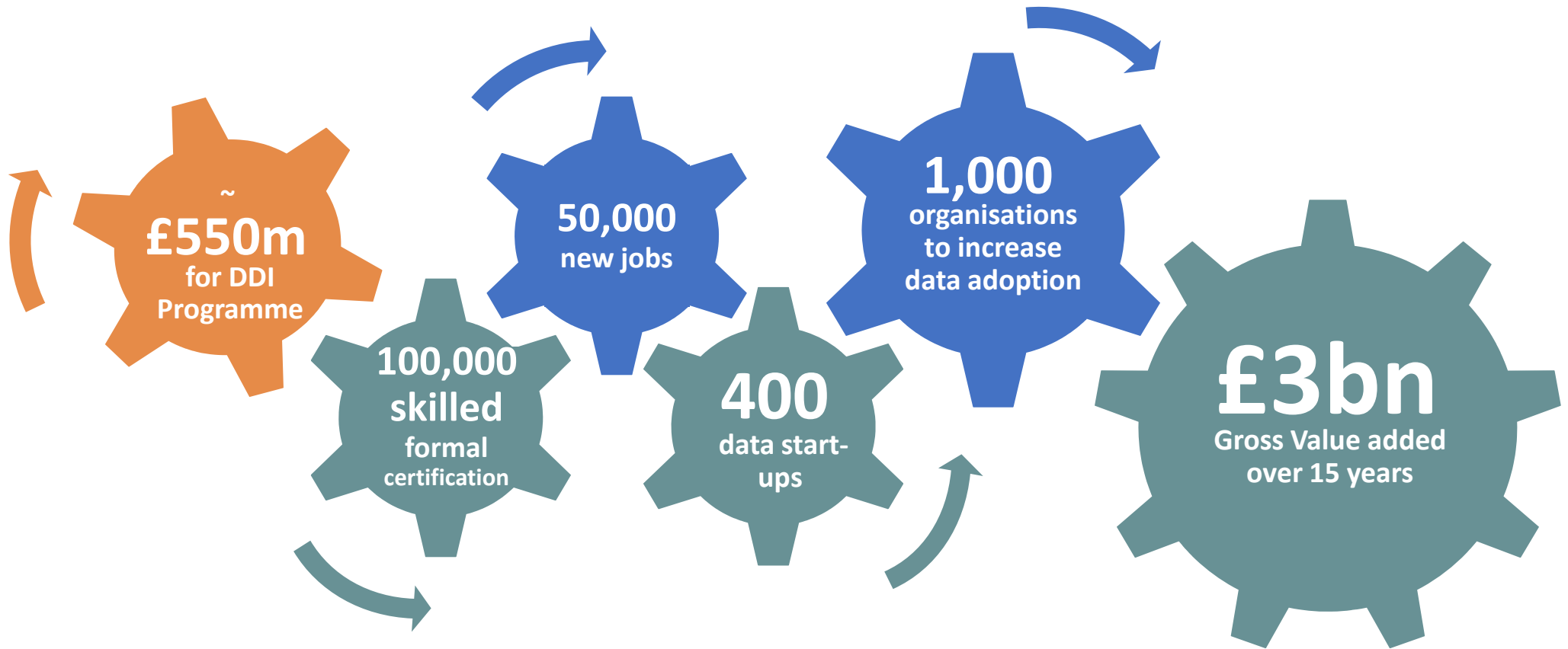
The DDI Programme will expand on this proven approach.

The underpinning World-Class Data Infrastructure service will be aligned to robust data governance.

We want to encourage 'data-savvy' citizens to make better informed decisions through improved knowledge and understanding of data.



What do we intend to achieve?



Little France Campus

Brain-Body Inst
(planned)

Queen's Med Res Inst
2005; 650 researchers

Chancellor's Building
2002; 250 researchers

Royal Infirmary
2002; 970 beds, GCRC

Kids & Neuro Hosps
2017, GCRC

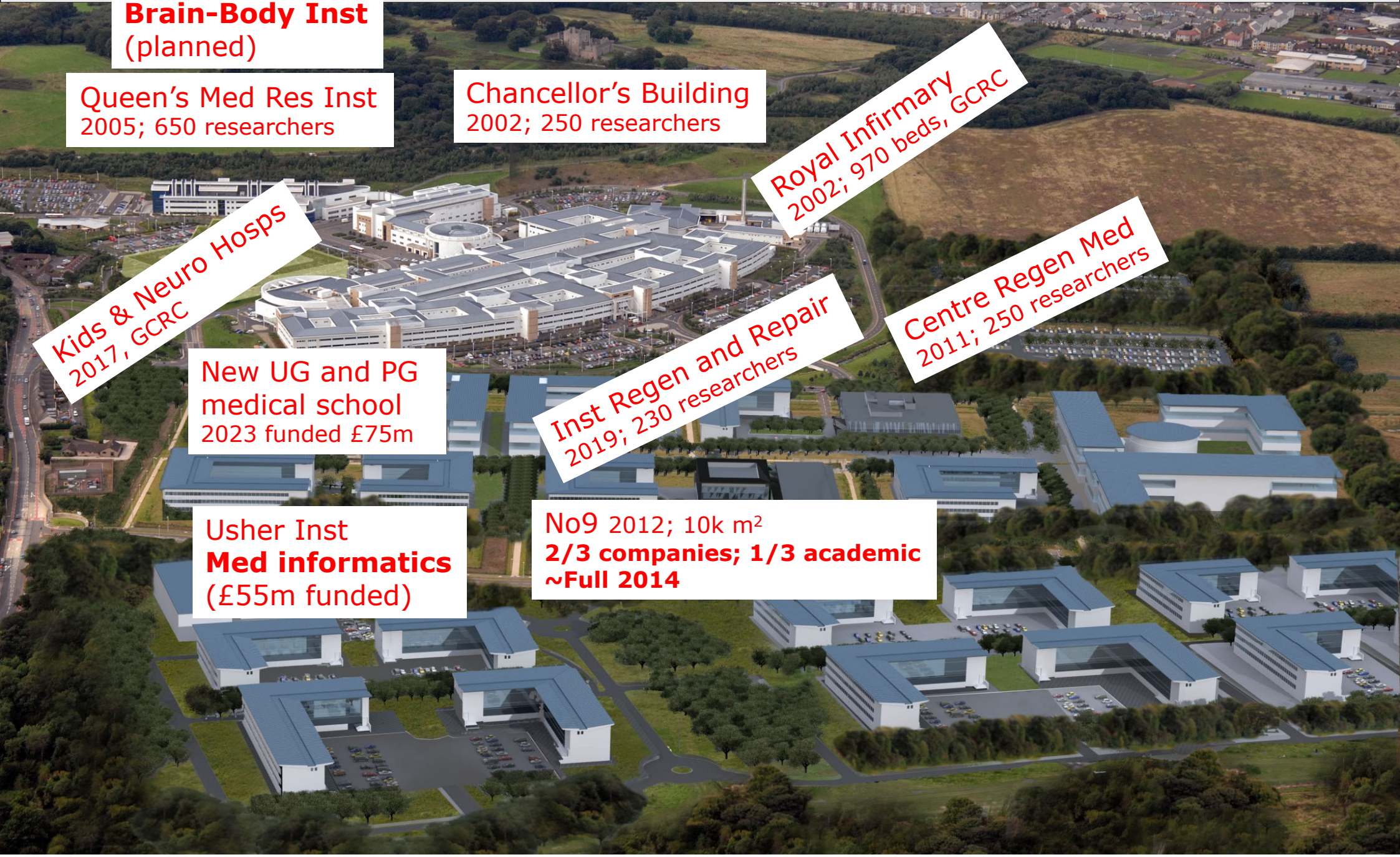
**New UG and PG
medical school**
2023 funded £75m

Inst Regen and Repair
2019; 230 researchers

Centre Regen Med
2011; 250 researchers

**Usher Inst
Med informatics**
(£55m funded)

No9 2012; 10k m²
2/3 companies; 1/3 academic
~Full 2014



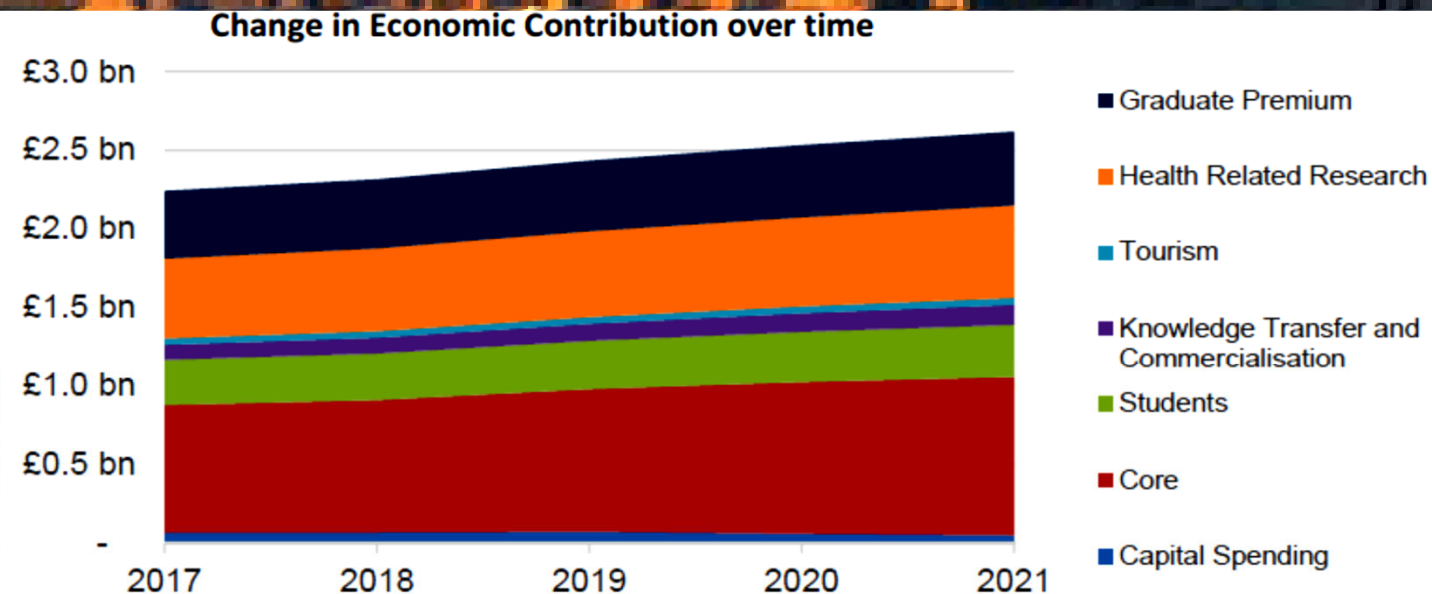
Economic Impact 2017-18

Univ. Edinburgh impact on the UK

- £3.5bn GVA for UK economy (£5.2bn globally)
- 46,000 UK jobs
- £9.60 for every public £1 invested

And plugged into our local economy

- **Scotland:** £2.2bn GVA and 32,000 jobs
- **City of Edinburgh:** £1.7bn GVA and 26,000 jobs
- 2.51 jobs in Scotland for every person directly employed



It is expected that the economic contribution of the University of Edinburgh in Scotland would increase from £2.2bn in 2017 to £2.6bn in 2021.

And the future?

- Drive further research and innovation excellence
- Exploit DDI City Deal opportunities across the university and our partners.
- Build interdisciplinarity to address global grand challenges
- Mitigate Brexit including our 6 emerging 'deep partnerships' (Amsterdam, Leuven, Leiden, UCD, Copenhagen, Helsinki.. Etc)
- Deepen links globally to extend reach and impact
- Maximise cost recovery