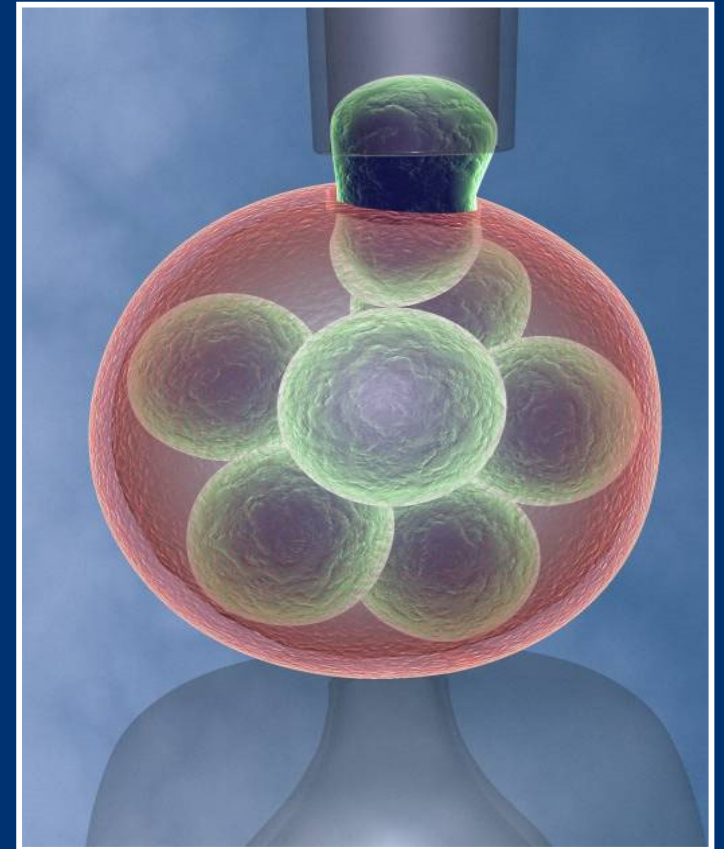


Funding at Wellcome

University of Edinburgh
24th April 2019



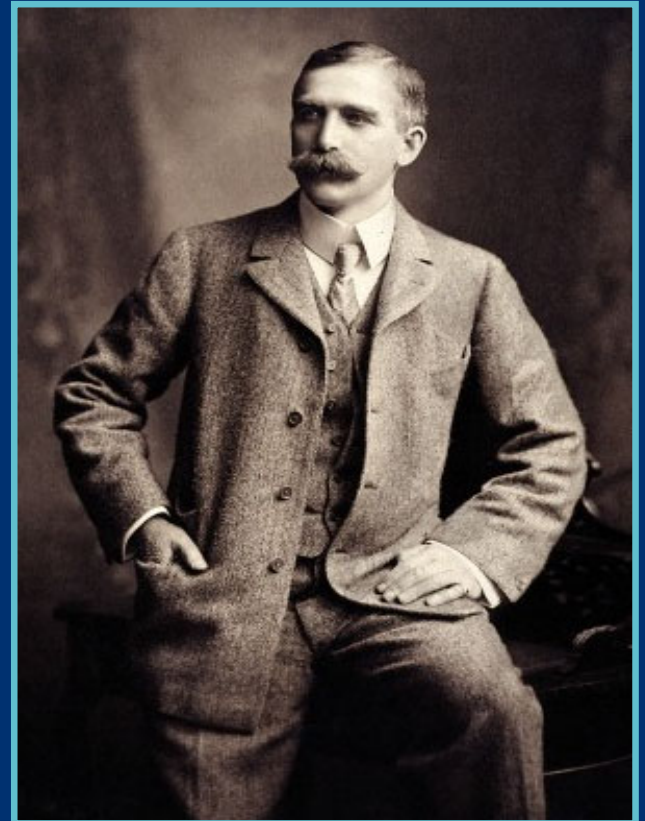
Wellcome

We are an independent global charitable foundation dedicated to understanding and improving health.

We were established in 1936 under the will of Sir Henry Wellcome.

We are funded from a private endowment ~ £26 Billion

We expect to spend ~£5 billion on charitable activities over the next five years



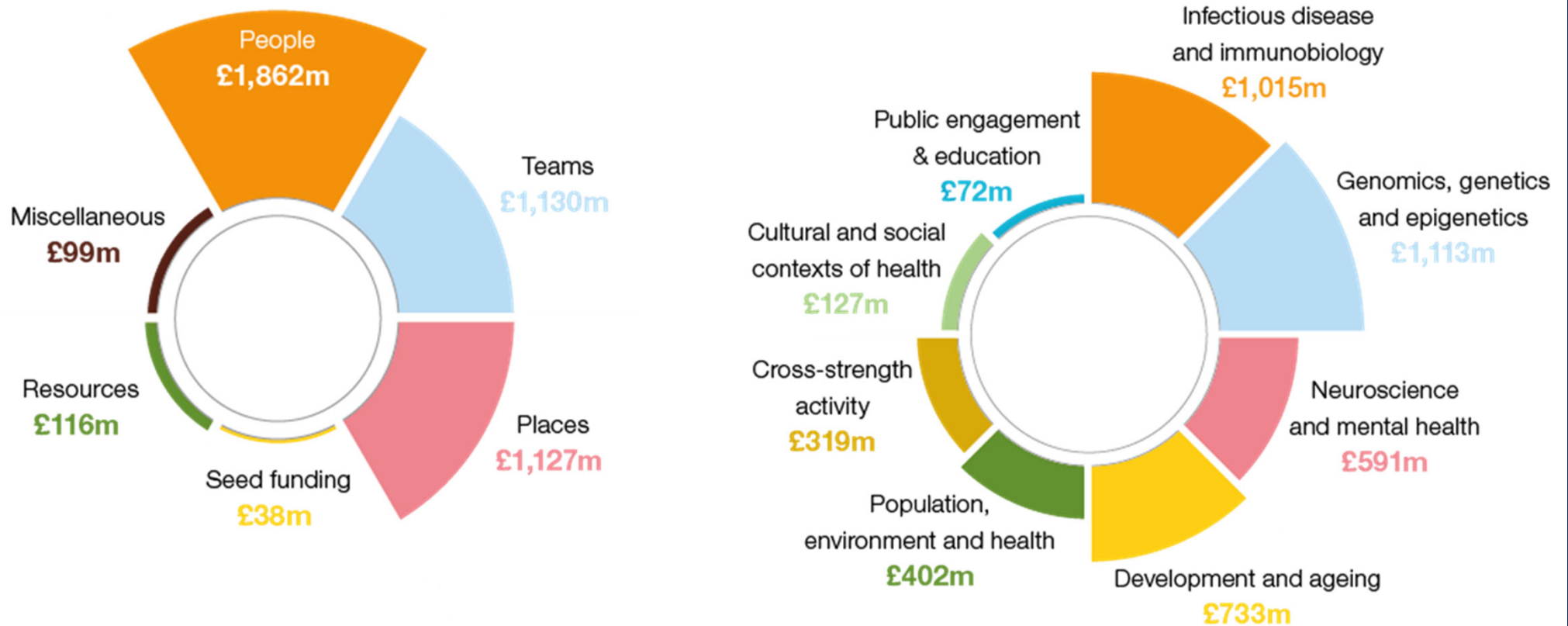
What we do

We want to improve health by:

- Understanding the processes that underpin life
- Exploring the way social, historical and ethical factors affect how people experience healthcare
- Developing new technologies, treatments and diagnostics
- Engaging the public
- Influencing healthcare policy



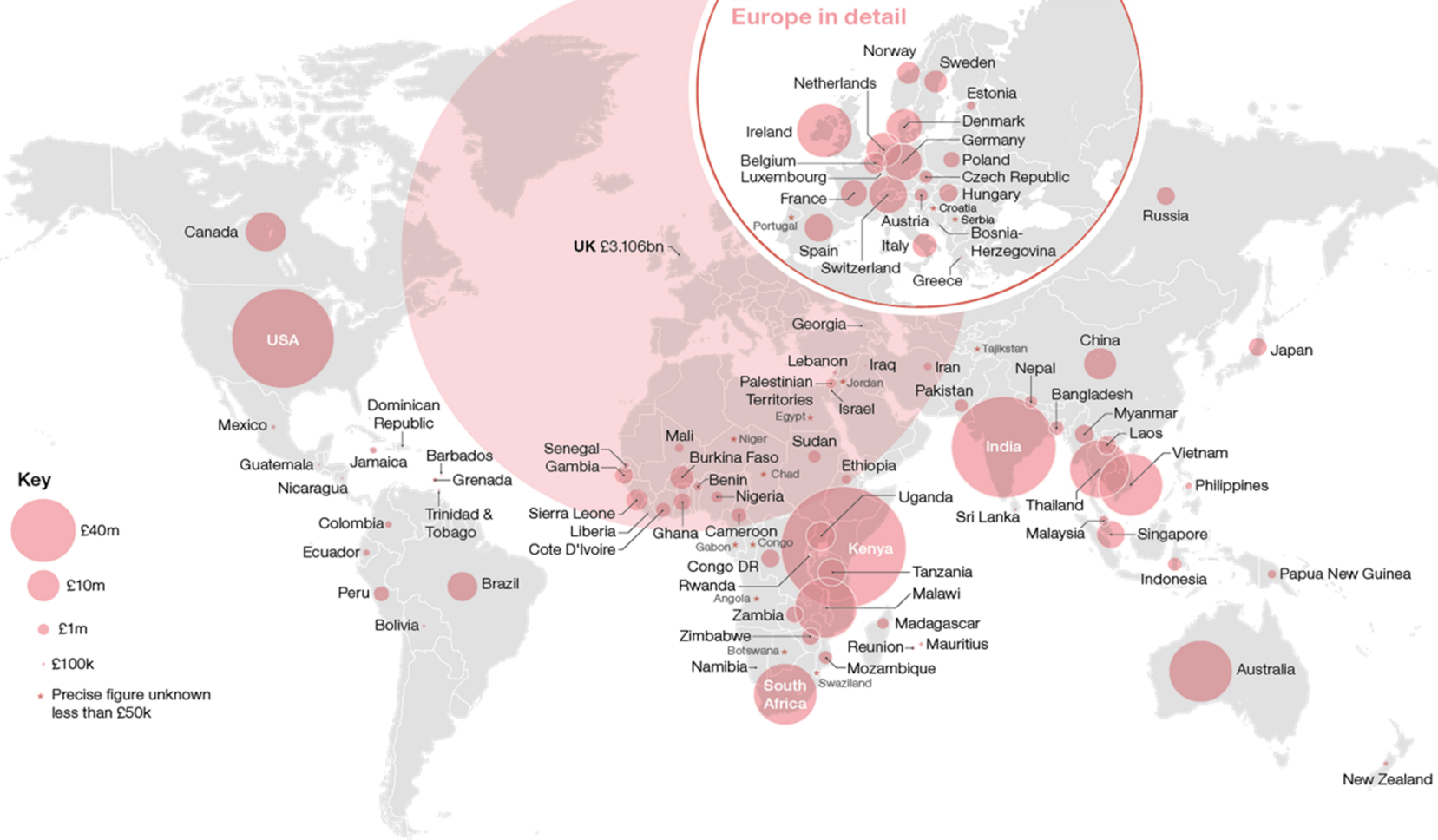
Our current grant portfolio



Note: The categories 'Places' and 'Genomics, genomics & epigenetics' in the above charts each include £550m for Sanger Centre operating costs over 5 years.

Our current grant portfolio

Global distribution of our funding



How we organise our funding

‘Primary’

- 3 Funding Divisions: Science, Innovations, Culture & Society
- Eligibility mainly UK, Ireland & LMICs
- Funding is mostly response-mode and competitive
- Expenditure c£900 million per year, will continue at similar levels to current.

‘Reserve’

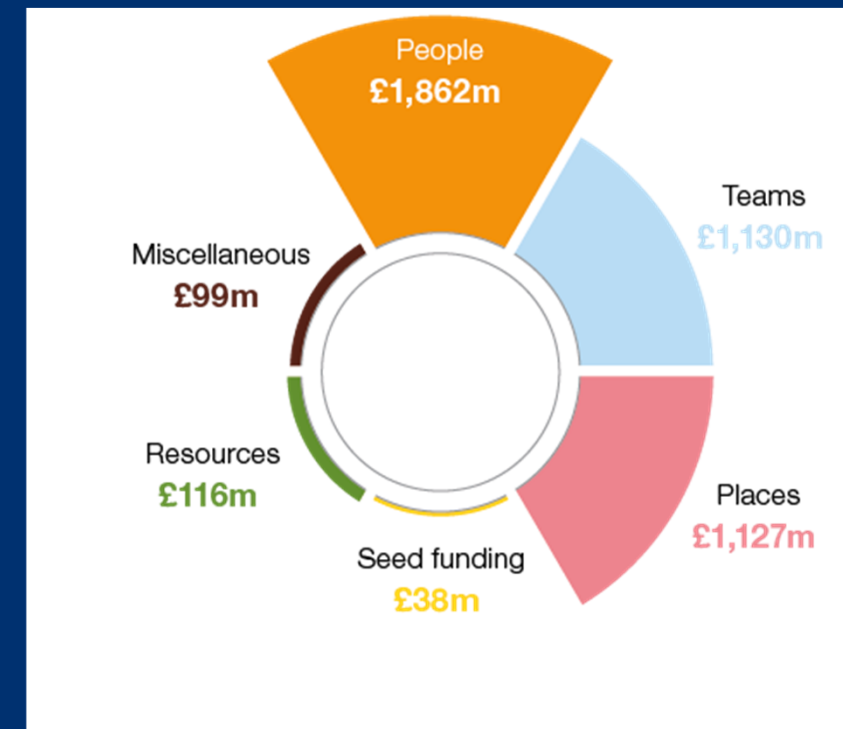
- Strategic Initiatives to deliver very specific outputs and outcomes.
- Largely not open response-mode.

Current funding opportunities

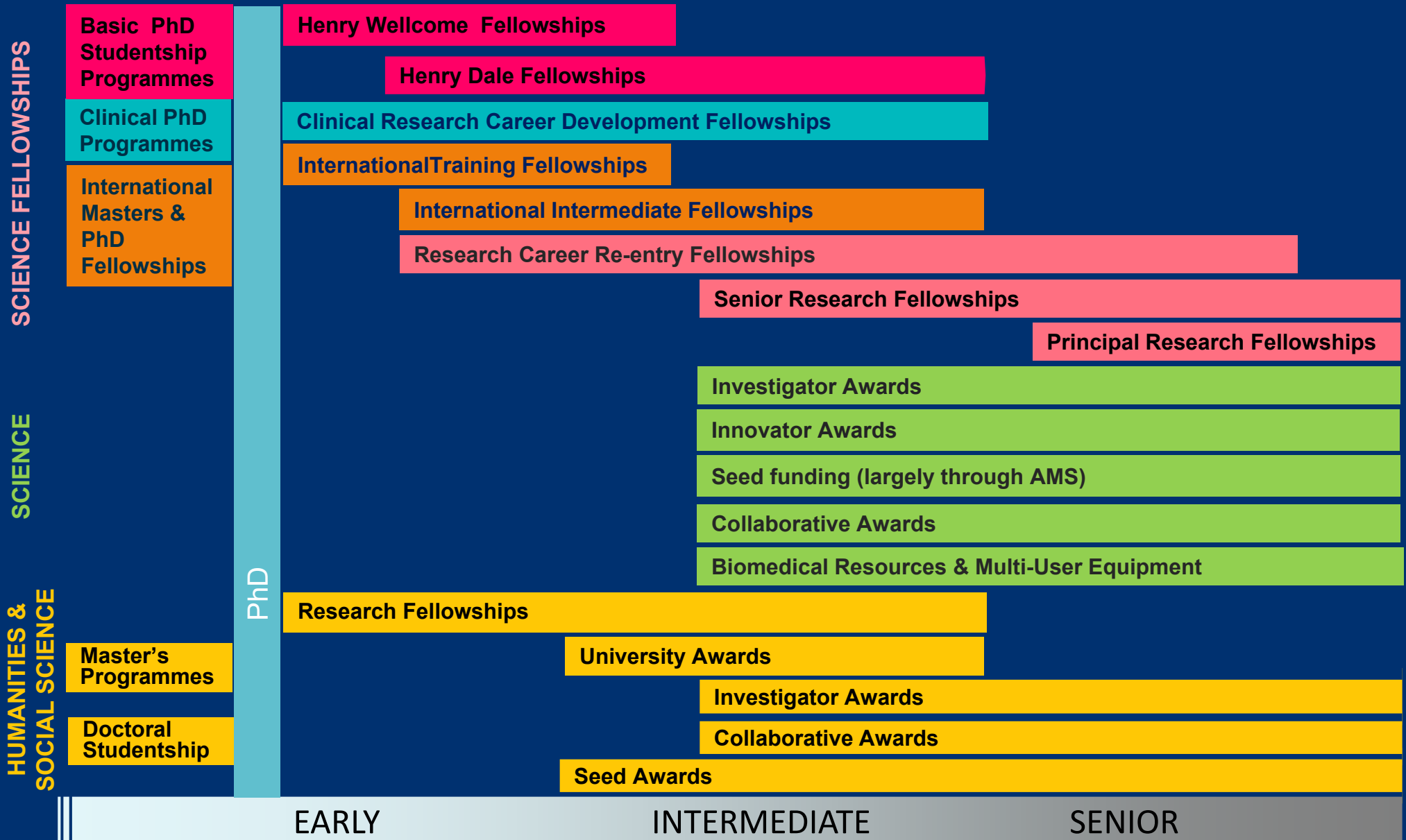
Primary funding

Response mode funding for:

- **People** - support for individuals and career pathways.
- **Teams** - support for research groups.
- **Places** – core support for centres of excellence and building capacity (e.g. ISSF, ITPAs)
- **Resources** - for enabling work and equipment that underpins research.



Support for researchers



Our future funding strategy

Primary: Science



Ongoing Science review to:

- establish a clear aspiration and bold ambitions for future Wellcome science funding
- identify the ways – what, who, where, how - to achieve these ambitions
- define realistic progress and success measures

Primary: Innovations

Goals:

- maximising translation from our science base
- rapid development of products, technologies and interventions
- developing an impact portfolio.

By:

- Translational Partnerships
- Flagships
- Innovator awards



Thermostable oral rotavirus vaccine

innovations@wellcome.ac.uk

Reserve: Strategic initiatives

The first seven priority areas are:

- Vaccines
- Drug Resistant Infections (AMR)
- Mental Health
- Our Planet, our Health
- Diversity and Inclusion
- Strengthening Research Ecosystems in Africa and Asia
- Science Education

Specific stand-alone teams. Largely NOT open response-mode

To deliver very specific outputs and outcomes

The Leap Fund: Funding transformative high-risk research

Grant policy initiatives

Current focus areas:

- Bullying & Harassment
- Diversity & Inclusion
- Open Research
- Research Culture
- University Assurance

And who can forget Brexit!

Summary

- Ever wider range of interests and activities
- Period of major change
- How we use our independence most effectively