



Wellcome funding

Humanities and Social Science

Glasgow Caledonian University, Tue 4th June 2019

Paul Woodgate

Portfolio Developer, Humanities & Social Science

Our origins

We remain true to the vision and values of our founder, Sir Henry Wellcome, a medical entrepreneur, collector and philanthropist.

His will established a charity for "the advancement of medical and scientific research to improve mankind's wellbeing".



Charitable activities

£1.17m

First 20 years

£20m

1985

£260m

1994

£1,034m

2016

Humanities and Social Science Funding: the last 6 years

- Expanding the remit
- Over 1000 grants awarded at around 400 different organisations
- Supporting well over 1000 researchers at a variety of career stages (directly & indirectly)
- Supporting researchers mostly in the UK, but also in the Republic of Ireland and in low- and middle-income countries

Open/response mode: what does this mean...?

- health and its social, cultural, economic, and political contexts
- the 'Wellcome' difference: 'ambitious and transformative'
- occasional themed calls for emerging areas of interest





Case Studies & Grant Types

Professor David Clark

University of Glasgow

Interventions at the end of life - social, comparative and historical analysis to promote global improvement



Summary

The project is developing a comprehensive analysis of the emergent field of end of life care in order to understand how interventions are developed, implemented and assessed - and with what consequences. It takes a global perspective to examine approaches of varying types and characteristics, across differing resource settings - first to build a typology of interventions and then to conduct in-depth case studies of selected examples.



**Professor Sarah
Cunningham-Burley**
University of Edinburgh

**Professor Anne
Kerr**
University of Leeds



Translations and transformations in patienthood: cancer in the post-genomics era

Summary

The project builds on the grantholders' previous work on genetic subjecthood and lay/expert dynamics in biomedical science. Here, they explore where and how patients feature in cancer research, clinical practice, public health, service reorganisation and advocacy work. They examine not only what kinds of patients are involved and how their tissues, data and perspectives are enrolled in research and practice, but also how the very idea of the patient, individually or as a group, is conceived, challenged and (re)configured.

Professor Jim Mills

University of Strathclyde

The Asian Cocaine Crisis: Pharmaceuticals, consumers and control in South and East Asia, c. 1900-1945



Summary

This project seeks to: explain the growth of a market for cocaine in Asia; account for government responses to this market; trace changing sources of supply and networks of distribution; identify the origins of ideas in Asia about cocaine; and use answers to these questions to provide radical new perspectives on the history of the production, consumption and control of medicines and intoxicants in the modern world.

Collaborative & Investigator Awards

Details

- three to five years, typically c£300k-c£1.5m
- can inc a research team, eg PhDs and post-docs
- research expenses inc travel, workshops, and meetings
- can inc PI/Co-I research leave/buy out
- PI must have established post and institutional support

Key Questions

- ✓ Is this a significant research topic, with related research questions?
- ✓ Does the team possess (or have a plan to recruit) the expertise to complete the project?
- ✓ Is it timely?
- ✓ Is the methodology appropriate and feasible?

Dr Claire Thompson

*London School of Hygiene &
Tropical Medicine*

Understanding the health and wellbeing challenges of UK food poverty and food aid: a qualitative study

Summary

Eight food aid workers, fifteen client families and 25 food aid-referring healthcare professionals will be repeatedly interviewed and consulted.

Videodiaries, accompanied food shopping trips and family interviews will be used to construct a detailed picture. The aim is to gain insight into the many factors shaping this complex public health issue and, in the process, generate findings that can inform health and social care responses to food poverty.



Dr Douglas Small

University of Glasgow

Cocaine and Cultural Mythology, c.1860-1919



Summary

Existing studies of cocaine have tended to prioritise either the historical, political, and economic factors underlying its criminalisation, or to treat it merely as part of a more general discussion of substance addiction. This study focuses on literary representations of cocaine to establish the cultural and symbolic function of the drug in representations of, among others, the medical professional, medical technological innovation, and the gendered relationships between patients and practitioners.

Dr Anna Pearce

University of Glasgow



Improving life chances and reducing child health inequalities: harnessing the potential of existing data

Summary

Examining why children from less advantaged backgrounds have worse health than their more advantaged peers and what might be done to prevent this. Drawing upon linked Scottish records and cohort studies to examine three questions: What factors lie on the causal pathway between socio-economic circumstances and children's health? Can we better predict which population sub-groups are most likely to benefit from additional support? To what extent might early years interventions...reduce health inequalities?

Research Fellowships and University Awards

Research Fellowships & Research Awards for Health Professionals

- three years (WTE) of full salary
- research expenses
- building research independence
- Strong mentor/supervisor and institutional support

University Award Details

- Full salary for first three years, 50% in fourth year, 25% in fifth year...and then a permanent post
- Requires significant institutional support

Key Questions

- ✓ Is this a significant research topic, with related research questions?
- ✓ Does the candidate have the track record to complete the project?
- ✓ Is the methodology appropriate and feasible?
- ✓ Is the candidate well supported?
- ✓ Will this have an impact on the candidate's career and progression as a researcher ?

Doctoral Studentships

- Fees and stipend for three years
- Research expenses including conference attendance and fieldwork
- Promising researchers with strong supervisory support for both project and career

From degeneration theory and industrial fatigue to intellectual disability and embodiment in 'insanity'...



Small Grants

- enabling researchers to build networks and develop new research agendas
- can include organising meetings
- activities could involve policy makers, healthcare practitioners or other groups relevant to your research
- Up to £30,000
- David Lawrence & Sarah Morley, Newcastle, *Regulating the Tyrell Corporation: Company Law and the Emergence of Novel Beings*





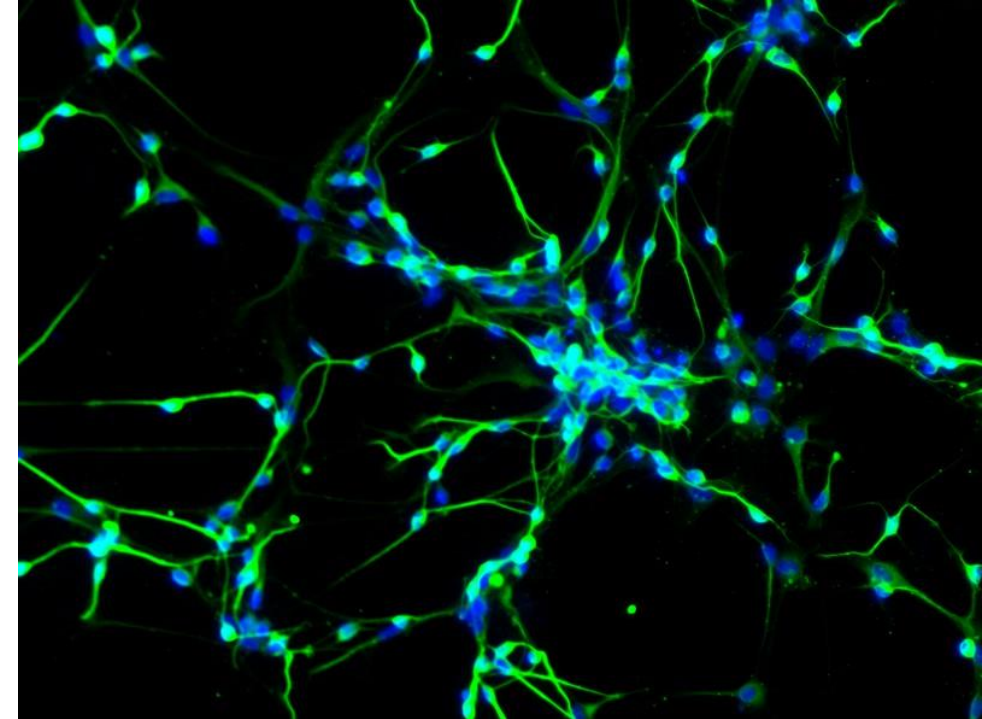
Key Application Tips

What makes a great application?

- A great idea...
- ...from the right person/people...
- ...with the right methods...
- ...at the right time...

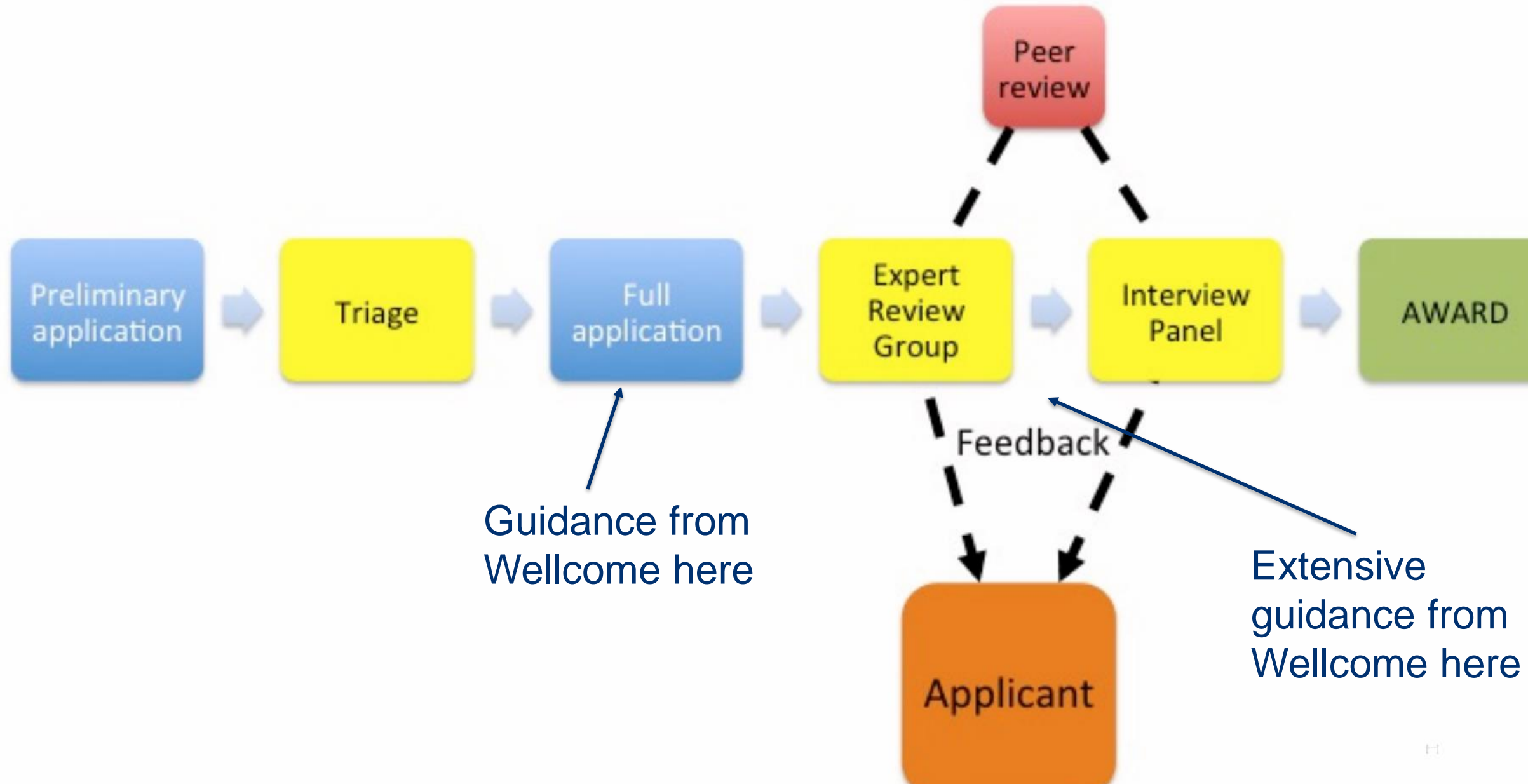
The research plan is central

- ‘ambitious research vision’ – make clear the Why?
- ‘details of research project’ – make clear the How?
- credibility on health topic...but not necessarily a career-long focus
- no preferred methods or collaborations
- no requirement for public engagement activity



Application Process

- Some schemes have only one stage (e.g. Small Grants, Doctoral Studentships)...
 - ...but most have three stages:
 - preliminary (internal assessment)
 - full application (Expert Review Group)
 - interview (Interview Committee/Selection Panel)
- Resubmissions of same project after full application stage not normally accepted.
- We recommend that you seek advice from colleagues, supervisors/mentors, and your research office at every stage.



Some Wellcome variety



Dr John Holmes
University of Sheffield
Young people are drinking less alcohol... but we don't know why. Is that a problem?



Dr Dorcas Kamuya
Kenyan Medical Research Institute
Why are people suspicious of medical research, and how can the case of biobanking in Sub-Saharan Africa help us understand mistrust around research?



Prof Devi Sridhar
University of Edinburgh
The Economic Gaze:
The World Bank's
Influence on Global
Public Health



Prof Tim Doran
University of York
How can we better assess the effectiveness of major public health and healthcare initiatives?

Research Resources Awards in Humanities and Social Science

These awards help collection and information professionals develop library and archive material for humanities and social science researchers.

Up to £500,000 and up to five years.

Deadlines every six months (April and October 2019)

*****stop press!!!*****

July 2019, details re two new schemes:

- **international exchanges**
- **research development awards**

& the pausing of Investigator & Collaborative Awards in 2020-21; pausing of Small Grants

July 2019

Web: <https://wellcome.ac.uk/news/new-funding-boost-global-research-capacity-humanities-and-social-science>

Any questions? Keep in touch!

Web: <https://wellcome.ac.uk/what-we-do/our-work/research-humanities-and-social-sciences>

Email:

p.woodgate@wellcome.ac.uk

t. @pjwoodgate

grantenquiries@wellcome.ac.uk