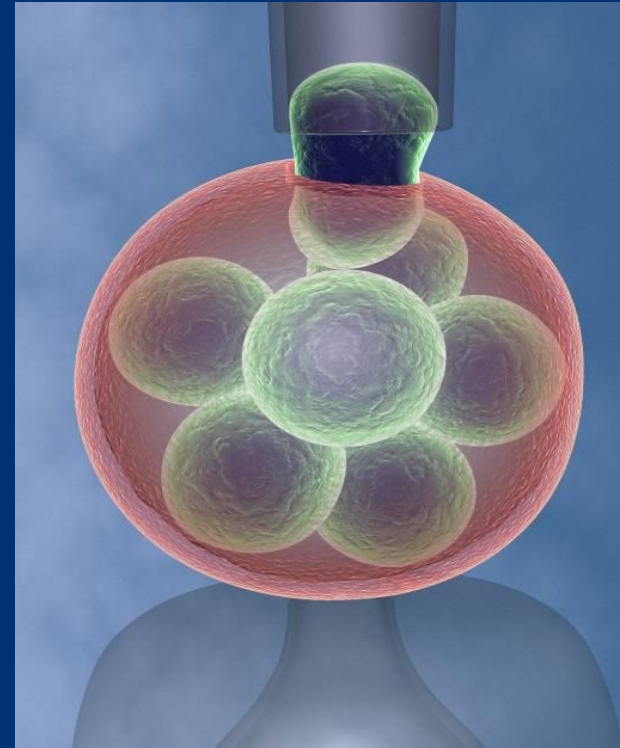




Wellcome

ARMA study day
14th May 2019



Questions?

*Go to [slido.com](https://www.slido.com) and use code **#G246***

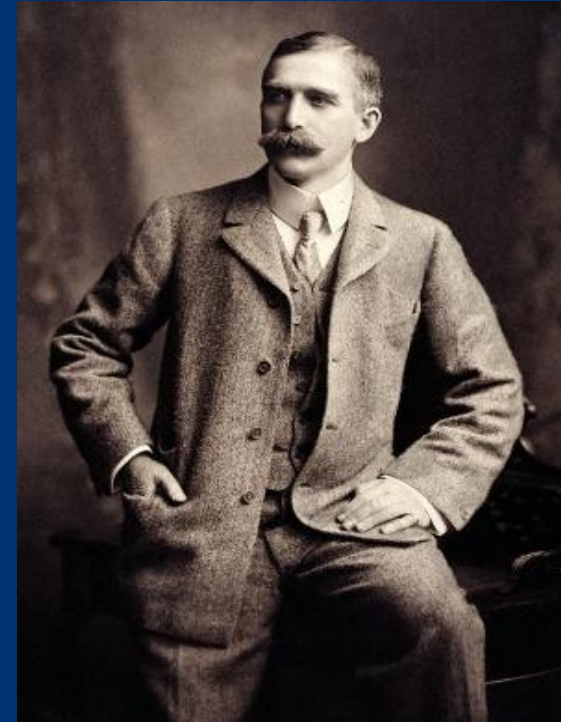
Wellcome

We are an independent global charitable foundation dedicated to understanding and improving health.

We were established in 1936 under the will of Sir Henry Wellcome.

We are funded from a private endowment ~ £26 Billion

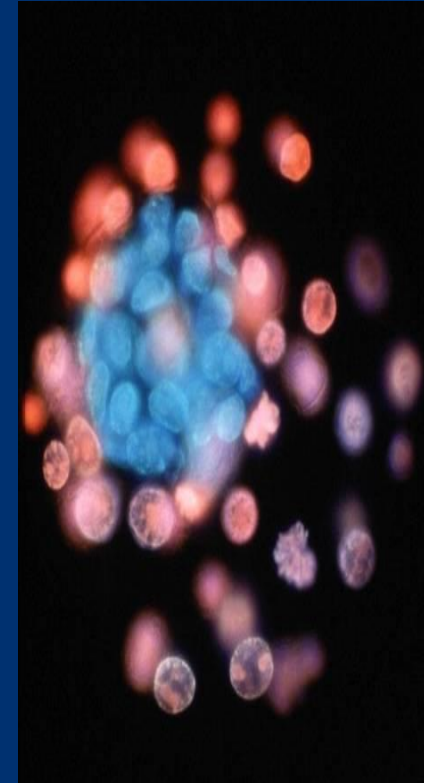
We expect to spend ~£5 billion on charitable activities over the next five years



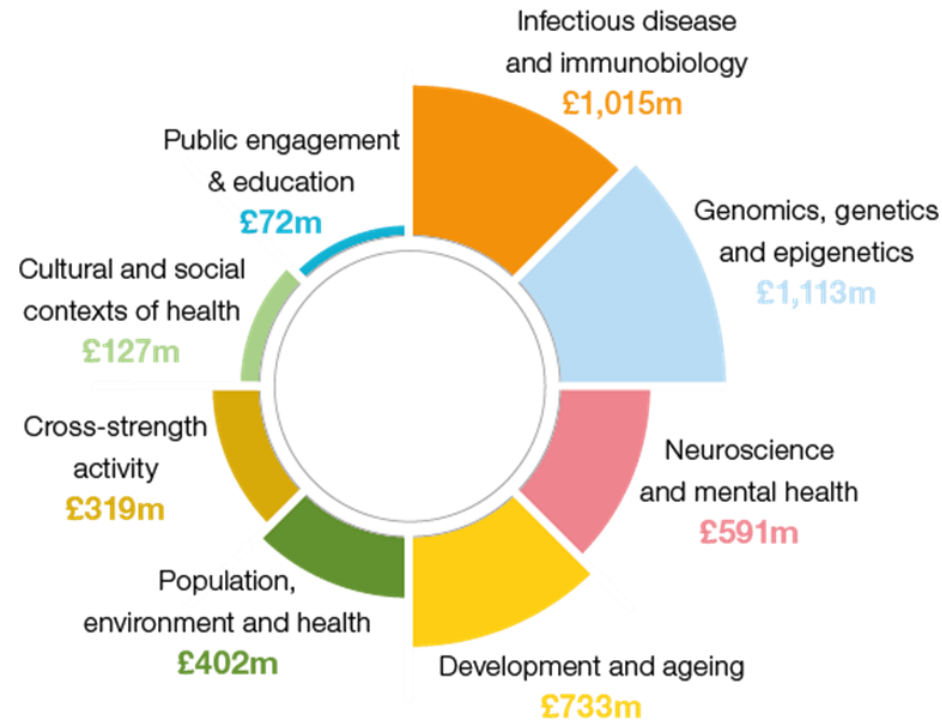
What we do

We want to improve health by:

- Understanding the processes that underpin life
- Exploring the way social, historical and ethical factors affect how people experience healthcare
- Developing new technologies, treatments and diagnostics
- Engaging the public
- Influencing healthcare policy

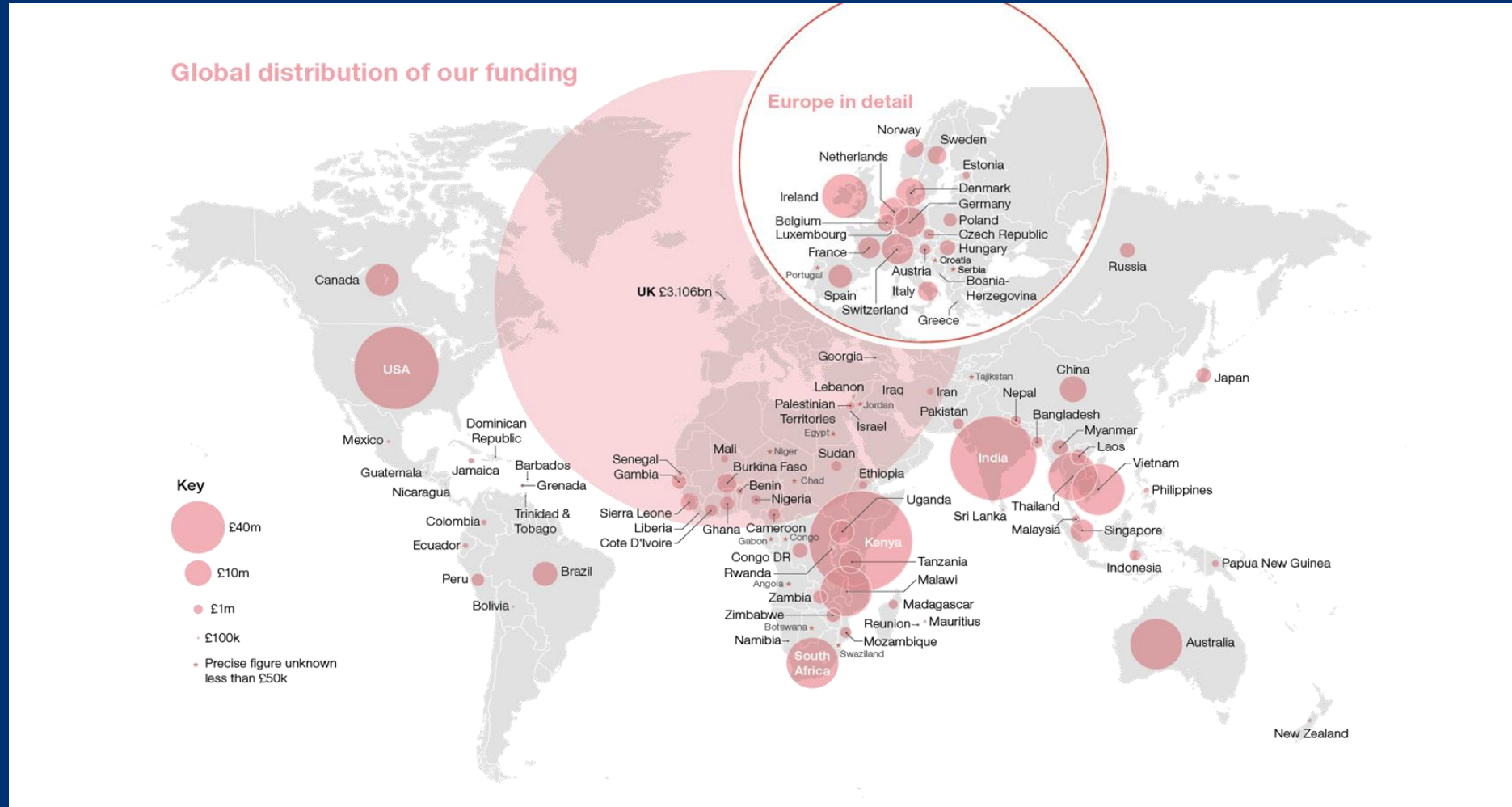


Our current grant portfolio



Note: The categories 'Places' and 'Genomics, genomics & epigenetics' in the above chart includes £550m for Sanger Centre operating costs over 5 years.

Our current grant portfolio



How we organise our funding

‘Primary’

- 3 Funding Divisions: Science, Innovations, Culture & Society
- Eligibility mainly UK, Ireland & LMICs
- Funding is mostly response-mode and competitive
- Expenditure c£900 million per year, will continue at similar levels to current.

‘Reserve’

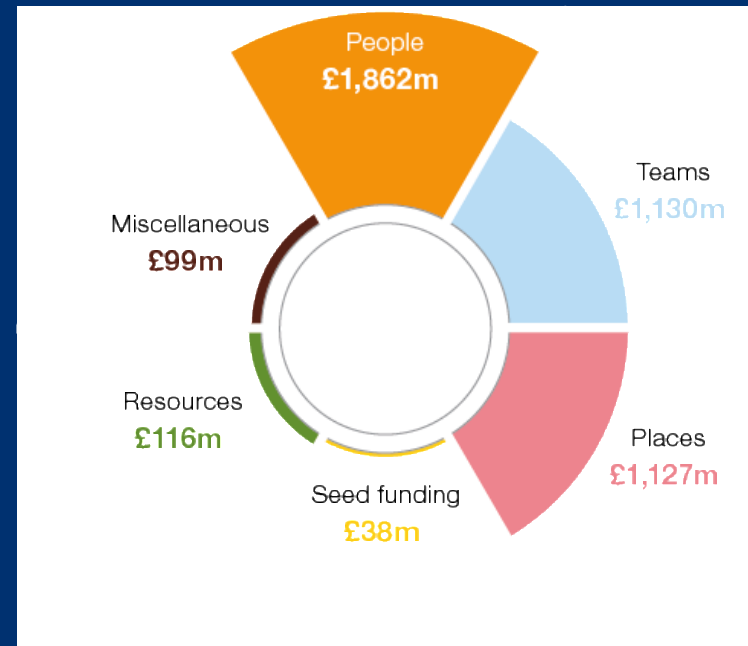
- Strategic Initiatives to deliver very specific outputs and outcomes.
- Largely not open response-mode.

Current funding opportunities

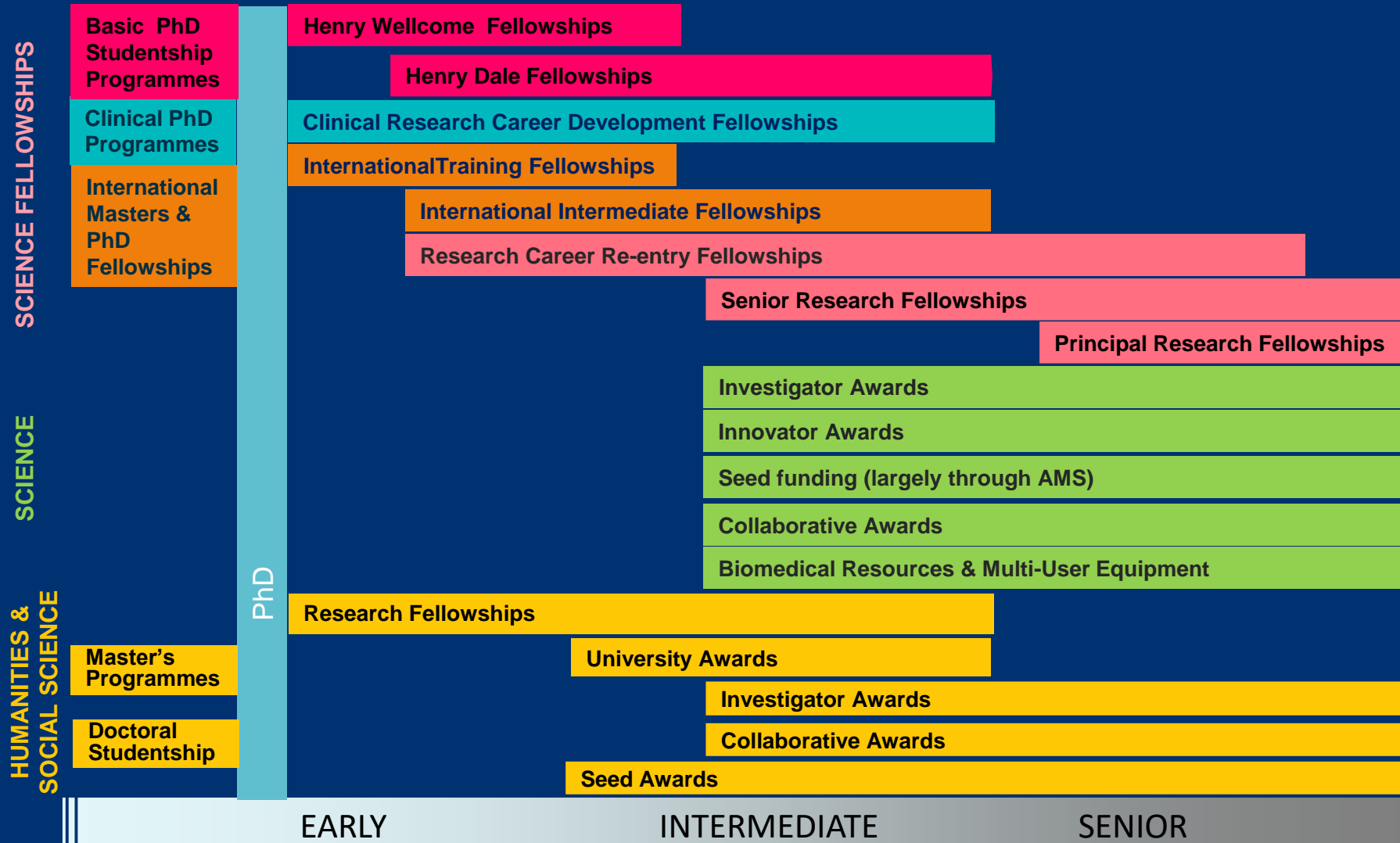
Primary funding

Response mode funding for:

- **People** - support for individuals and career pathways.
- **Teams** - support for research groups.
- **Places** – core support for centres of excellence (e.g. Sanger, Centres) and building capacity (e.g. ISSF, ITPAs).
- **Resources** - for enabling work and equipment that underpins research



Support for researchers



Assessment process



Assessment criteria

Person

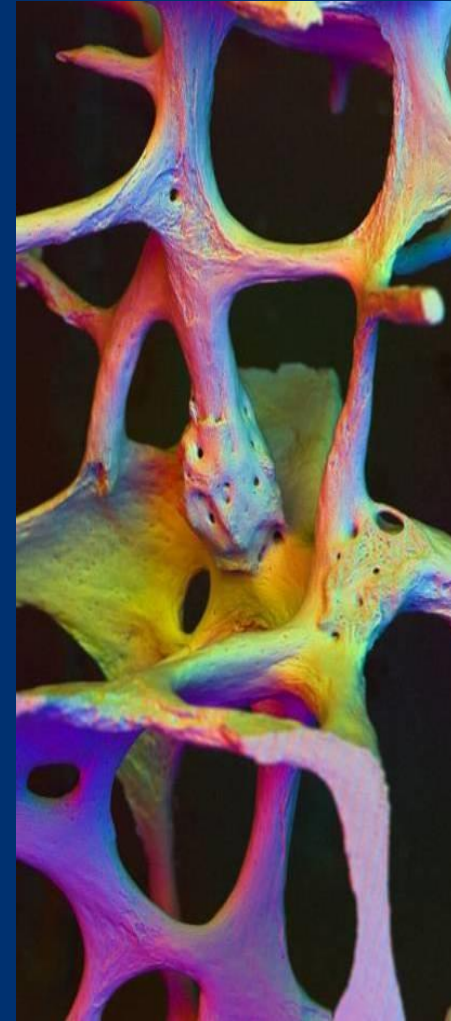
Programme

Place

‘Grantsmanship’

‘Good writing will not save bad ideas,
but bad writing can kill good ones’

Jacob Kraicer *The Art of Grantsmanship* 1997



Our future funding strategy

Primary: Innovations

Goals:

- maximising translation from our science base
- rapid development of products, technologies and interventions
- developing an impact portfolio.

By:

- Translational Partnerships
- Flagships
- Innovator awards



Thermostable oral rotavirus vaccine

innovations@wellcome.ac.uk

Primary: Science

Ongoing Science review to:

- establish a clear aspiration and bold ambitions for future Wellcome science funding
- identify the ways – what, who, where, how - to achieve these ambitions
- define realistic progress and success measures

‘Reserve’ Funding

Reserve: Strategic initiatives

Our current priority areas are:

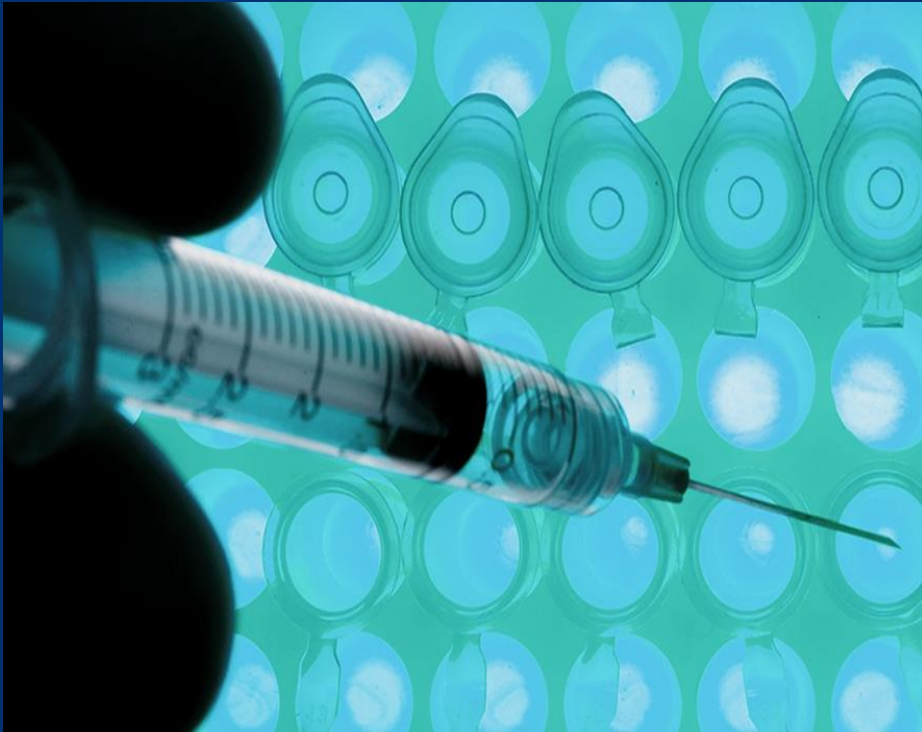
- Vaccines
- Drug Resistant Infections (AMR)
- Mental Health
- Our Planet, Our Health
- Diversity and Inclusion
- Strengthening Research Ecosystems in Africa and Asia
- Science Education

Specific stand-alone teams. Largely NOT open response-mode

To deliver very specific outputs and outcomes

The Leap Fund: Funding transformative high-risk research

Drug resistant infections



Diversity and inclusion



Grant policy initiatives

Current focus areas:

- Bullying & Harassment
- Diversity & Inclusion
- Open Research
- Research Culture
- Research on Research
- University Assurance

And who can forget Brexit!

Summary

- Ever wider range of interests and activities
- Period of major change
- How we use our independence most effectively



Application costs

ARMA Study Day

Tuesday 14th May

Common queries

- Ineligible costs
 - Such as bench fees, personal protective equipment, office equipment
 - Refer to our webpage 'Costs grantees can claim on a grant'
- Salaries
 - Is the salary appropriate for the expertise required?
 - Is the basic salary clear?
- Inclusion of fellowship supplement
 - Fellowship supplements and other additional costs are added by the office
- Changes to costs during the application process

Using the form effectively

- Make full use of the justification section
 - Helpful if a justification is given for each budget category
 - Reduces queries for applicants
 - Clear to Wellcome staff, peer reviewers and our committees
- Break down large sums of money
 - Easier to understand if there is a high level break down within each budget category

Materials and consumables

Description	Total (£)
Sequencing, Antibodies, genotyping	410,000
Consumables	480,000



Materials and consumables

Description	Total (£)
Protein biochemistry consumables: includes complement proteins, small equipment, disposable tubes, dishes, pipette tips, chromatography columns and resin etc)	80,000
Tissue culture consumables	90,000
Molecular biology consumables	15,000
General lab chemicals consumables	30,000
Lipid and detergent consumables	30,000
CryoEM consumables	30,000



Research management and support costs

- These costs are eligible if...
 - Your host organisation is in an LMIC and the grant will be directly awarded
 - Part of the grant will be sub-contracted to an organisation in an LMIC
- Total research management cost < 20% of the direct research costs
- You must:
 - give a full breakdown of costs (a percentage isn't detailed enough)
 - fully justify these costs
 - include a letter from the finance director of the organisation
 - confirmation that the breakdown is a true representation of the costs incurred